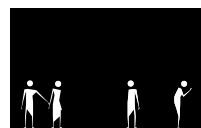
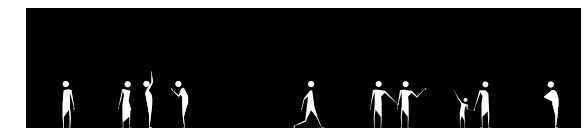


DANIEL PEMUELLER



ARCHITECTURE **PORTFOLIO**



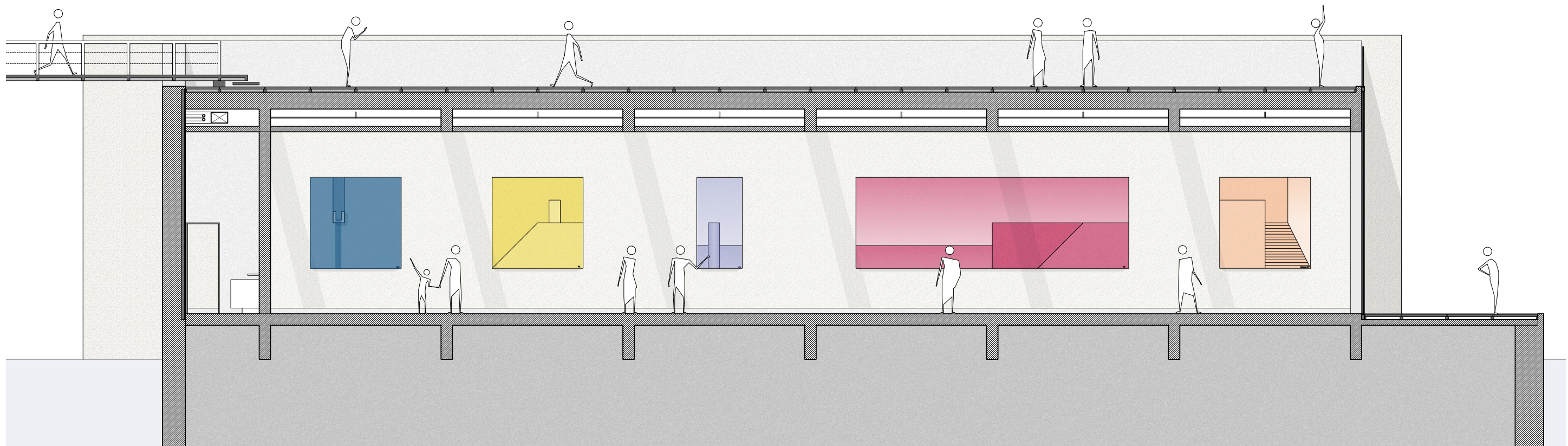
ISLE GALLERY

December 2023
Philadelphia, PA

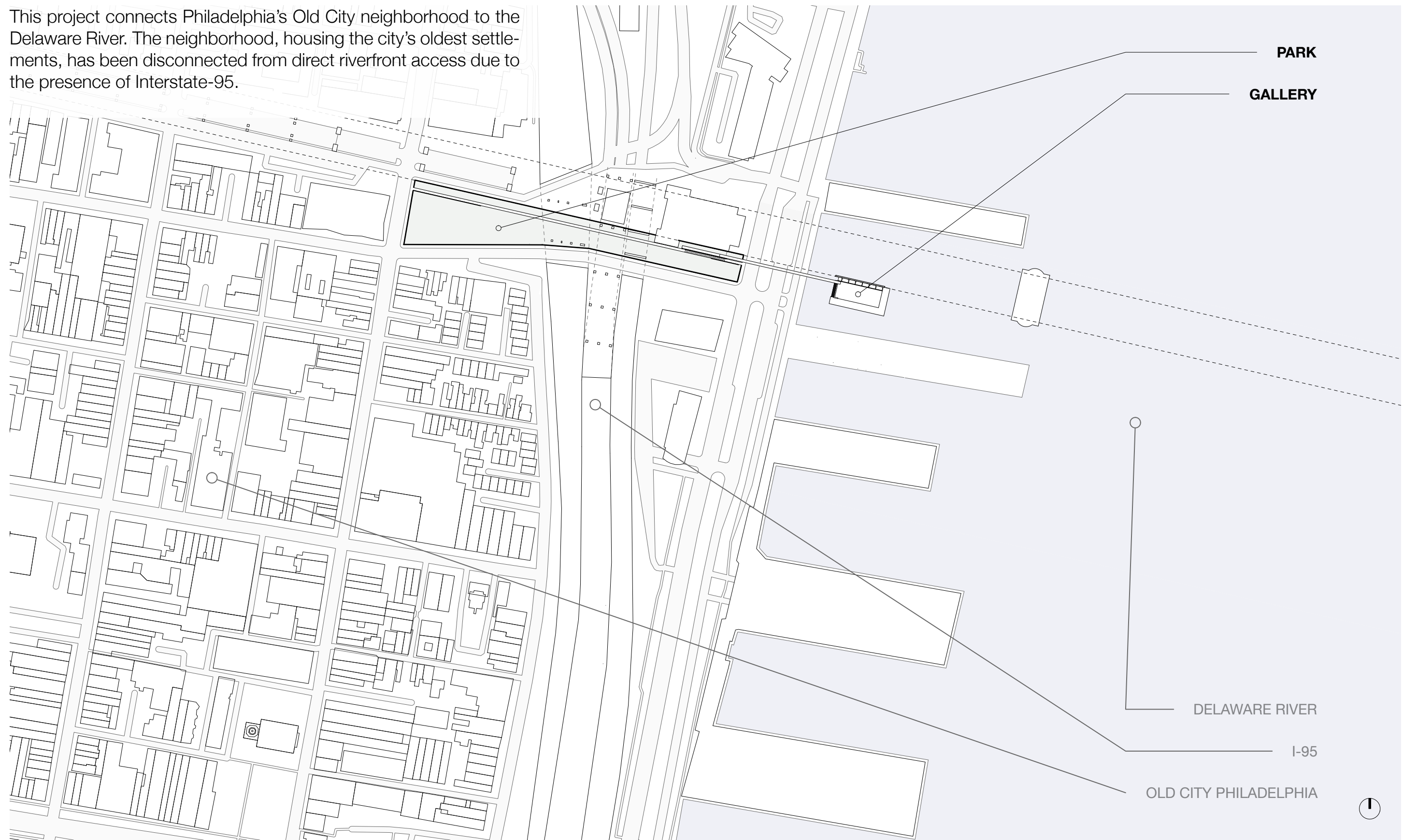
ARCH 4010 – Research Studio
Prof. WG Clark

Interior Area: 4,992 sq. ft. (464 m²)

This project consists of a gallery intended for exhibiting the artwork of local artists. This initiative aims to develop a community-oriented program in Philadelphia.



This project connects Philadelphia's Old City neighborhood to the Delaware River. The neighborhood, housing the city's oldest settlements, has been disconnected from direct riverfront access due to the presence of Interstate-95.



PARK

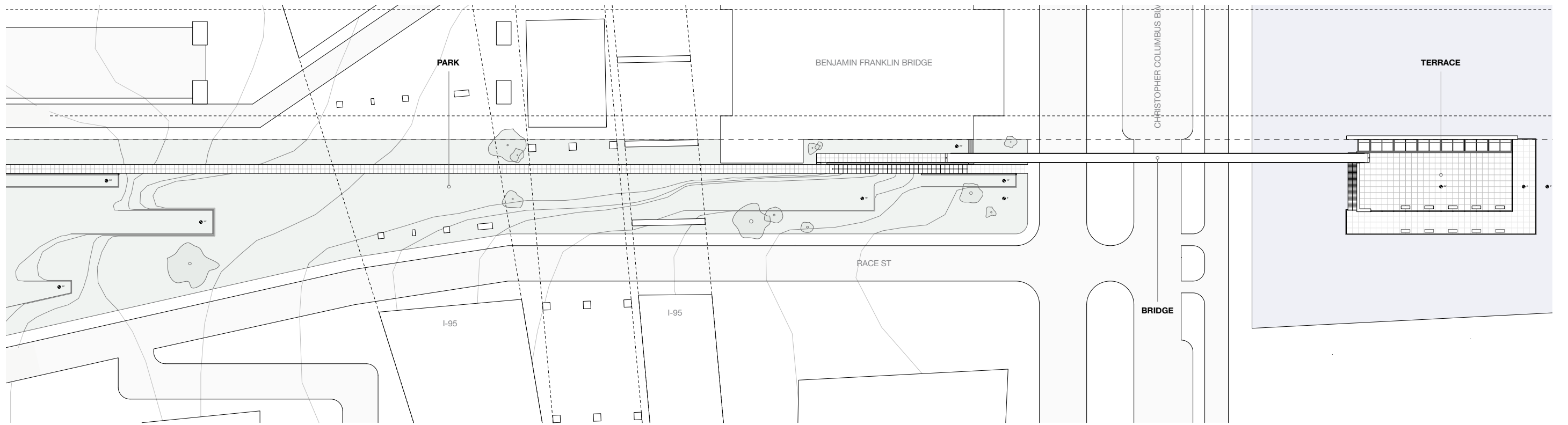
GALLERY

DELAWARE RIVER

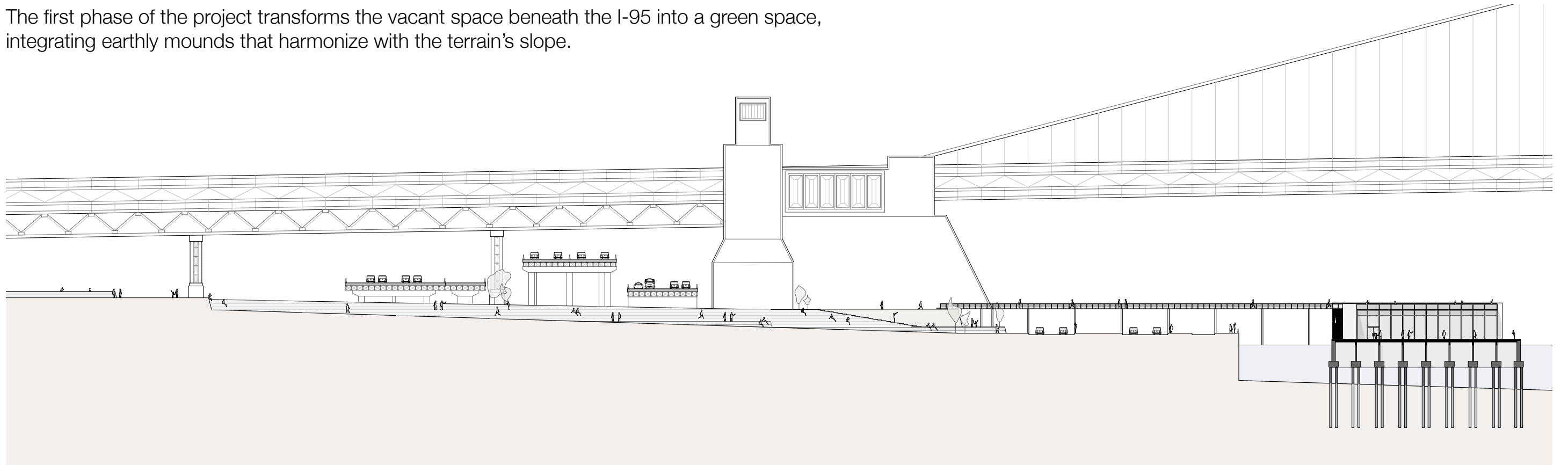
I-95

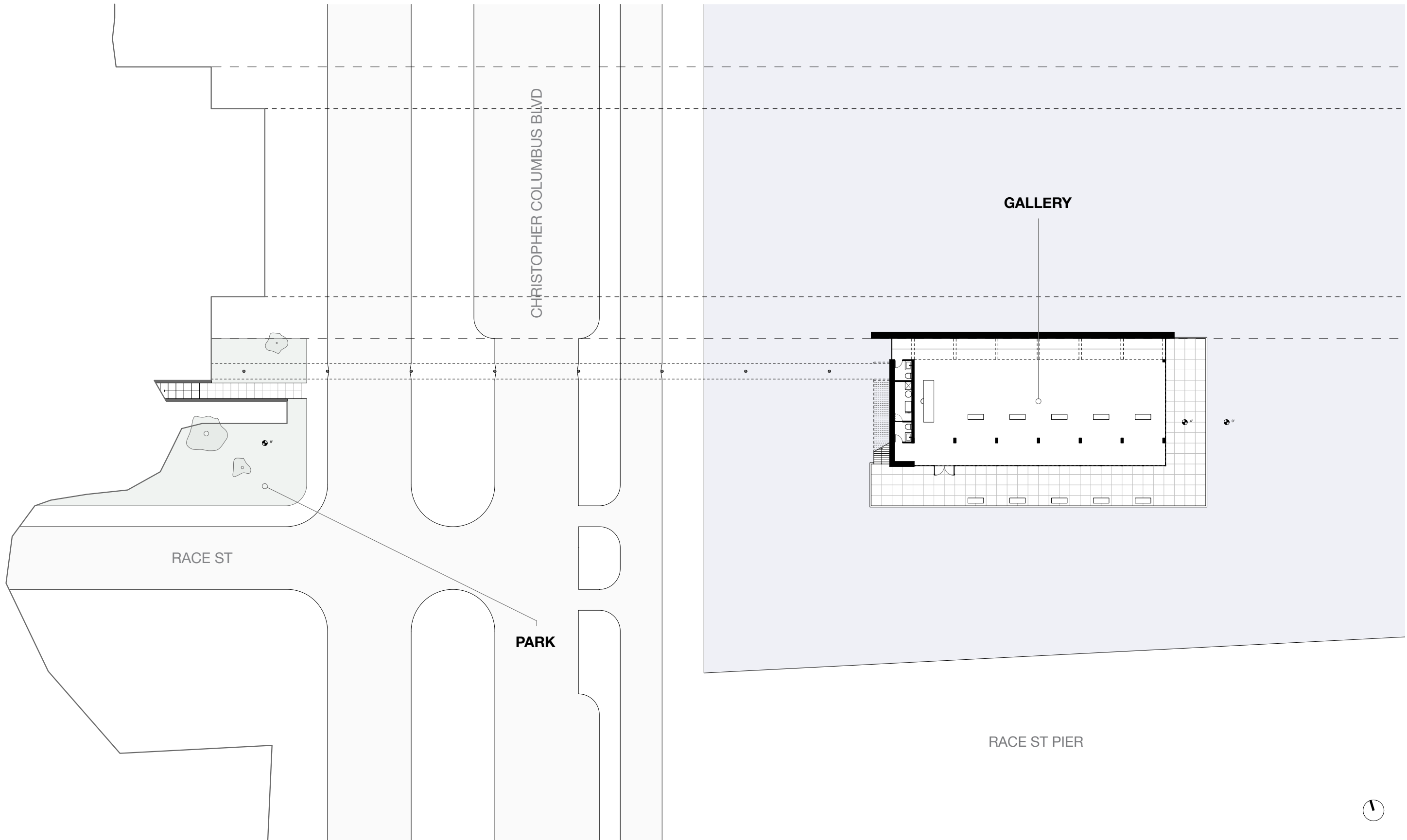
OLD CITY PHILADELPHIA

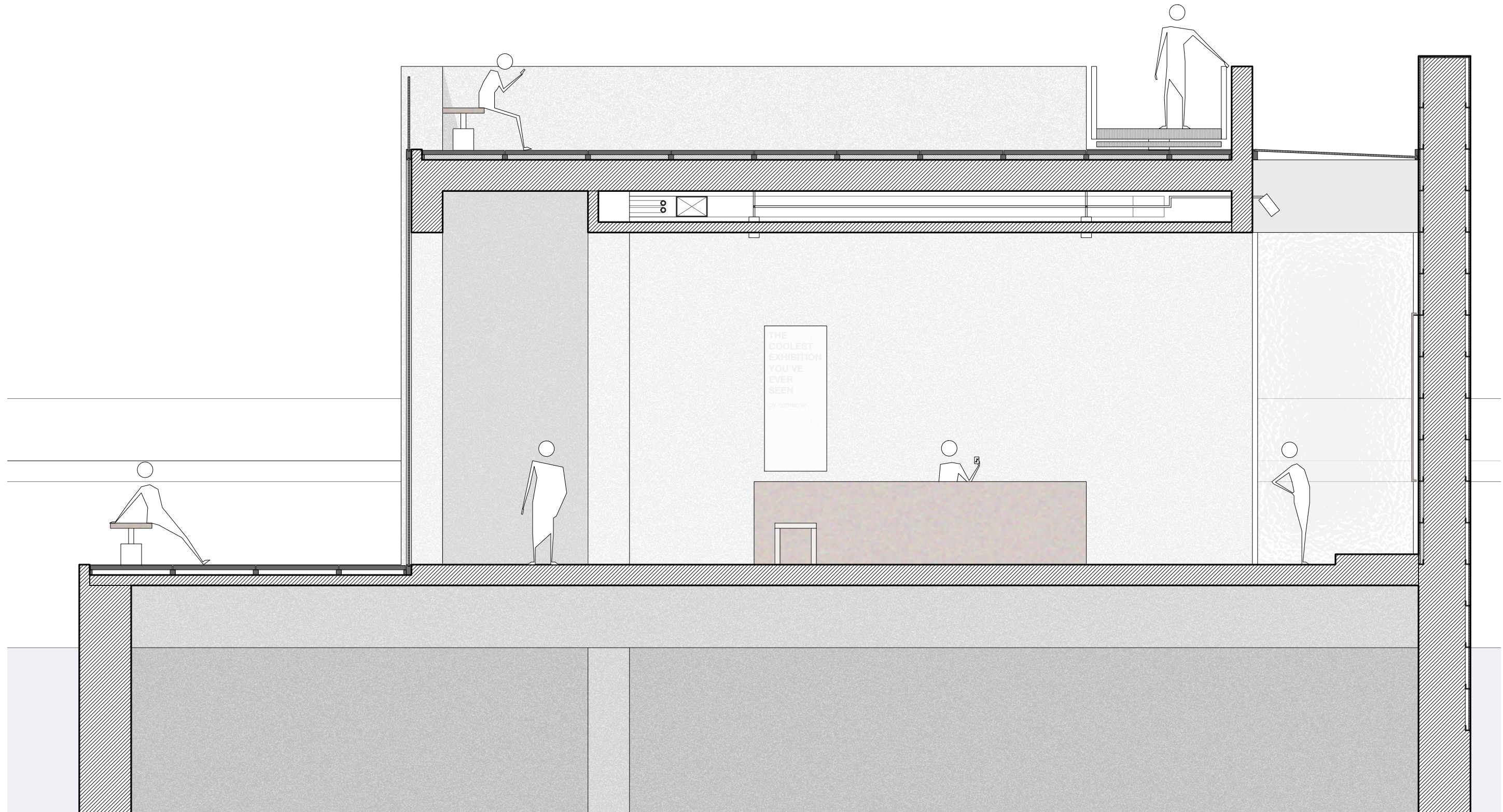




The first phase of the project transforms the vacant space beneath the I-95 into a green space, integrating earthy mounds that harmonize with the terrain's slope.







MONTICELLO INNOVATION CENTER

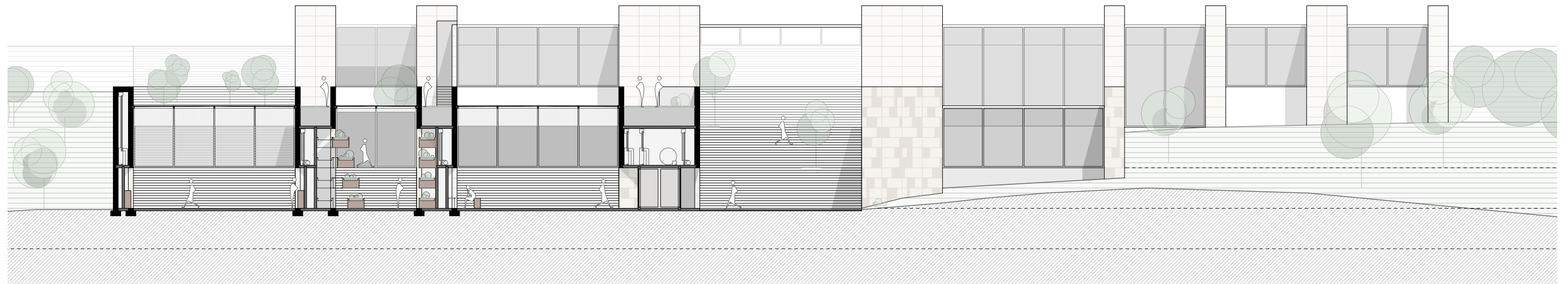
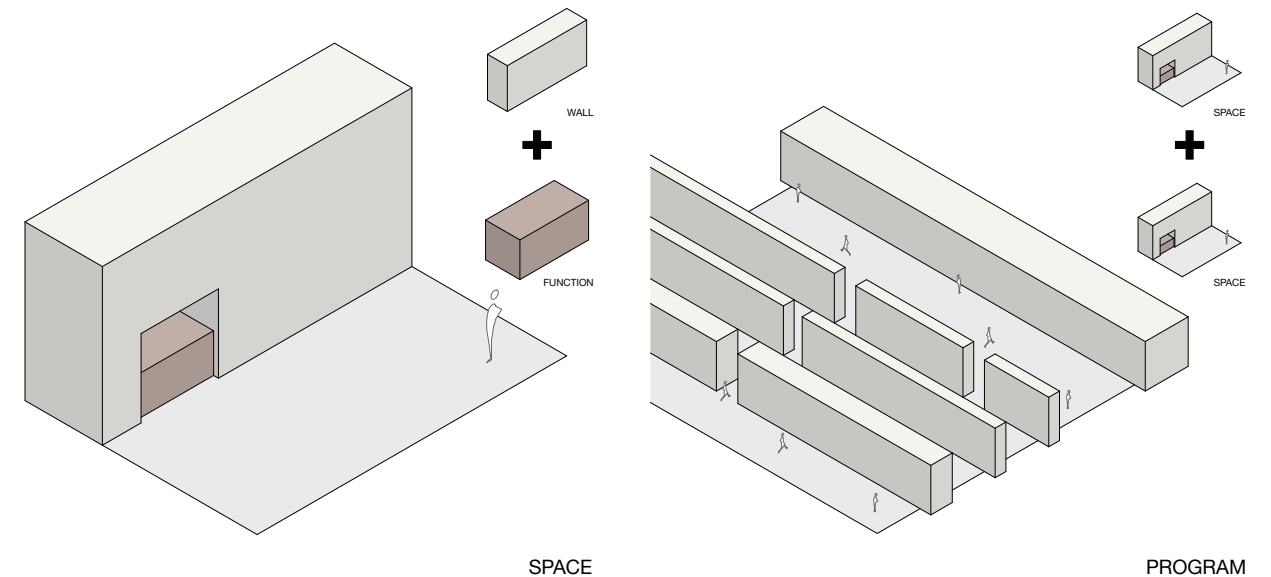
May 2023
Charlottesville, VA

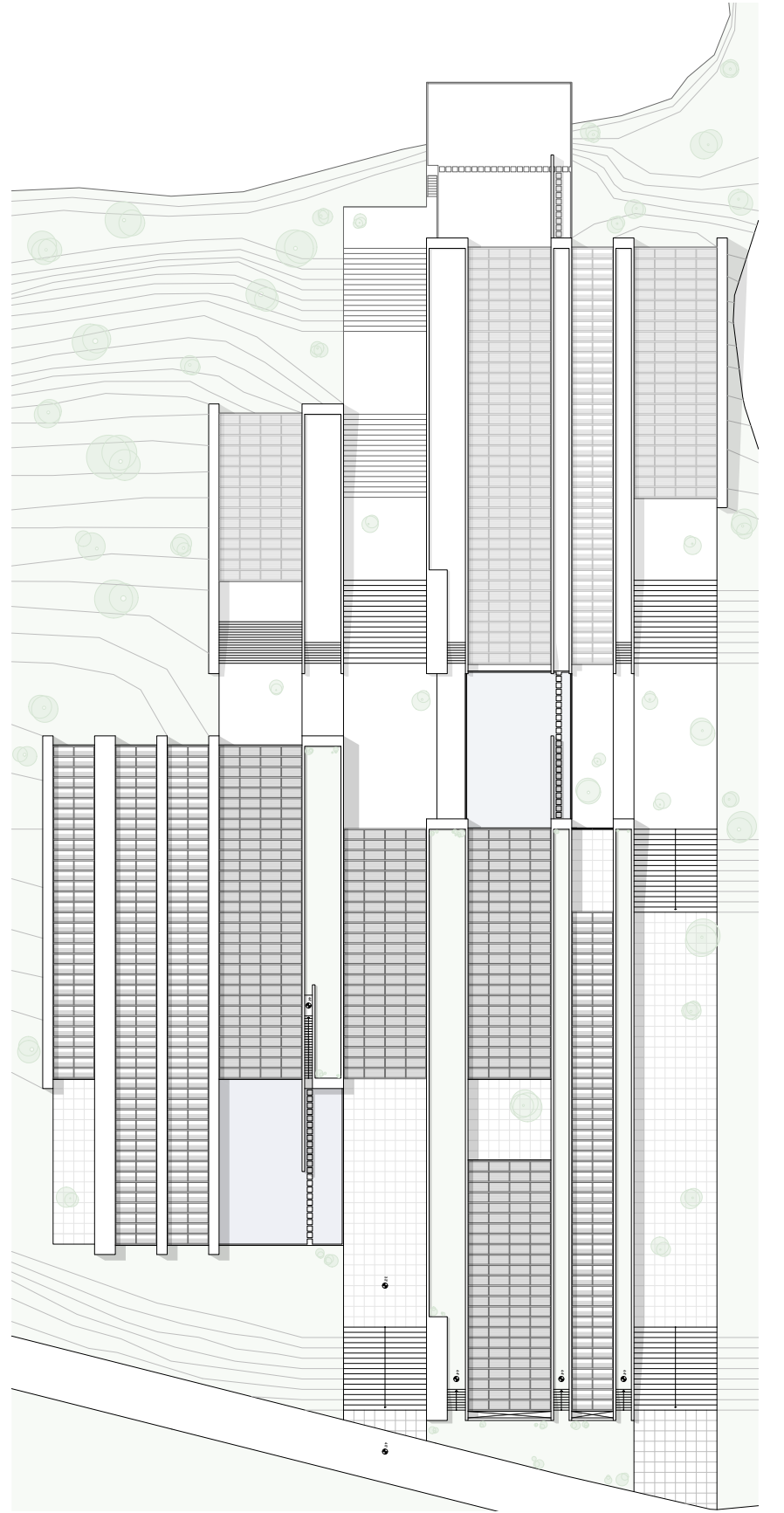
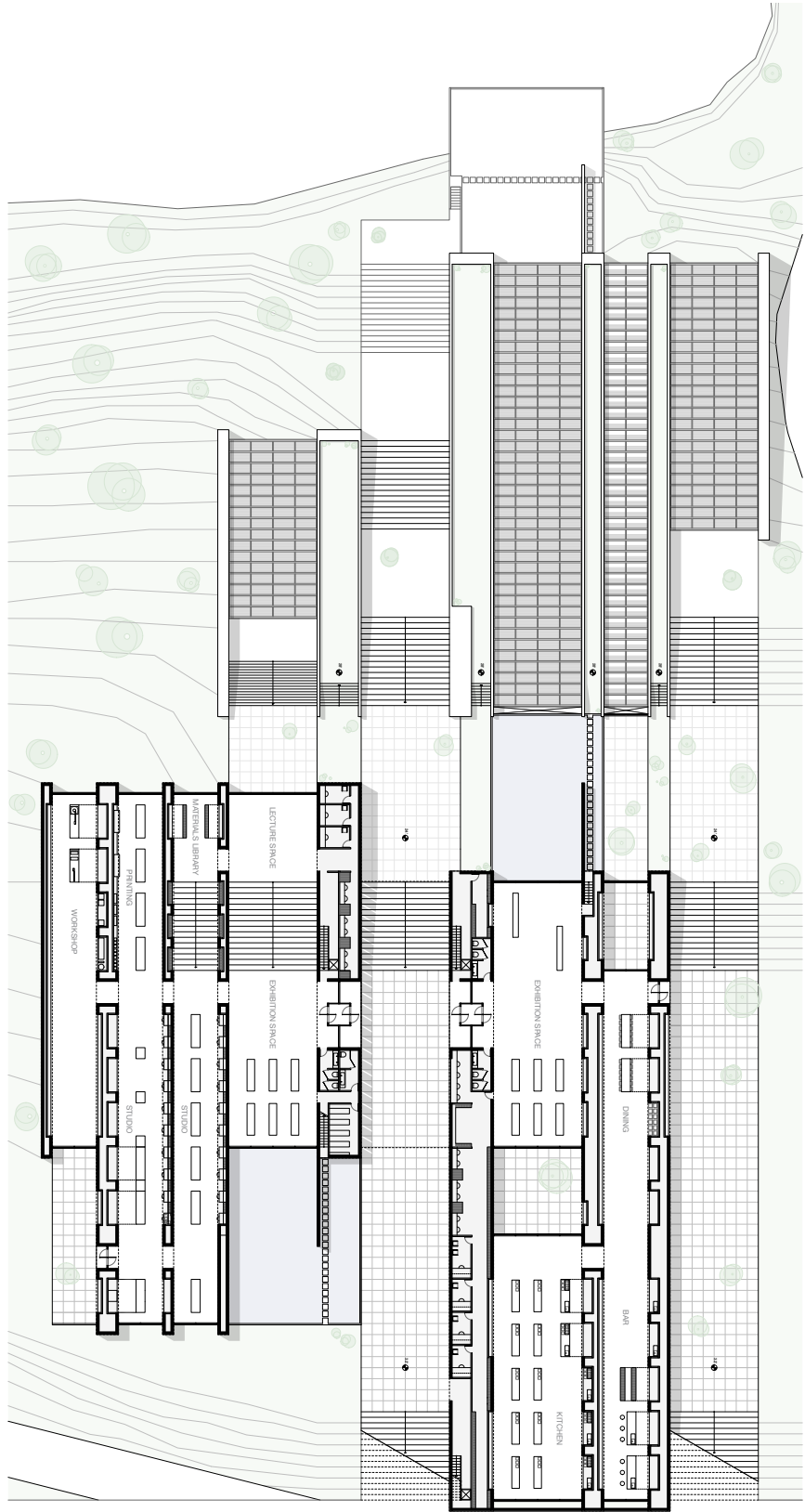
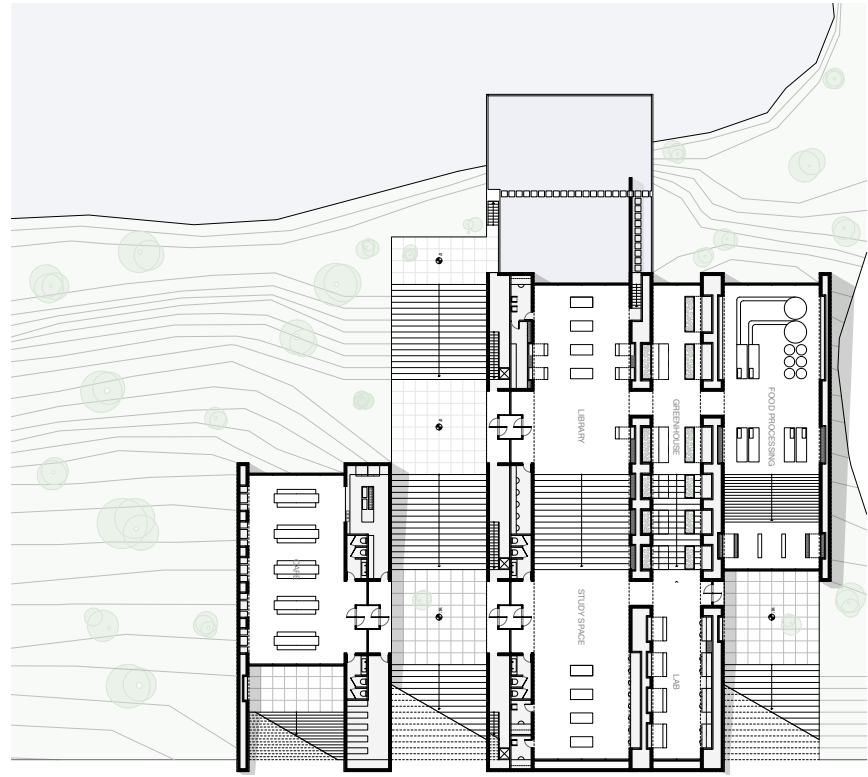
ARCH 3020 – Foundation Studio V
Prof. Bobby Vance

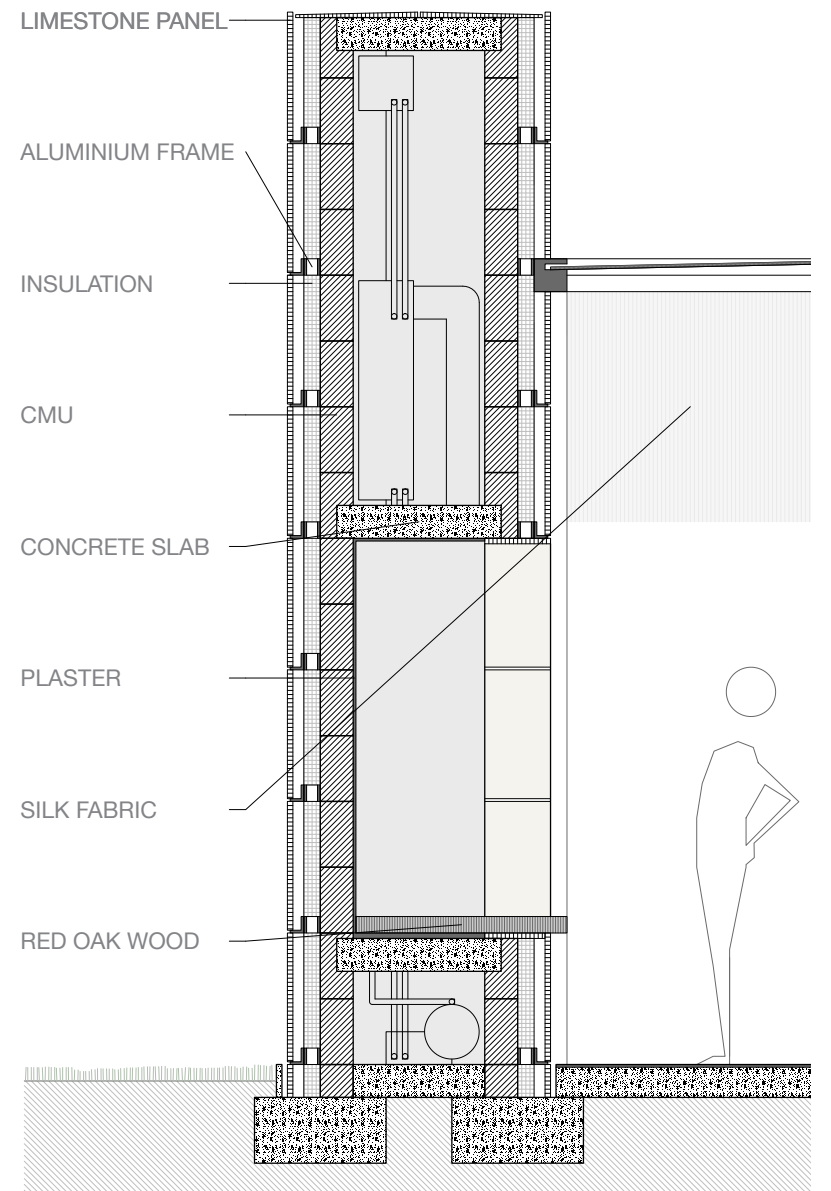
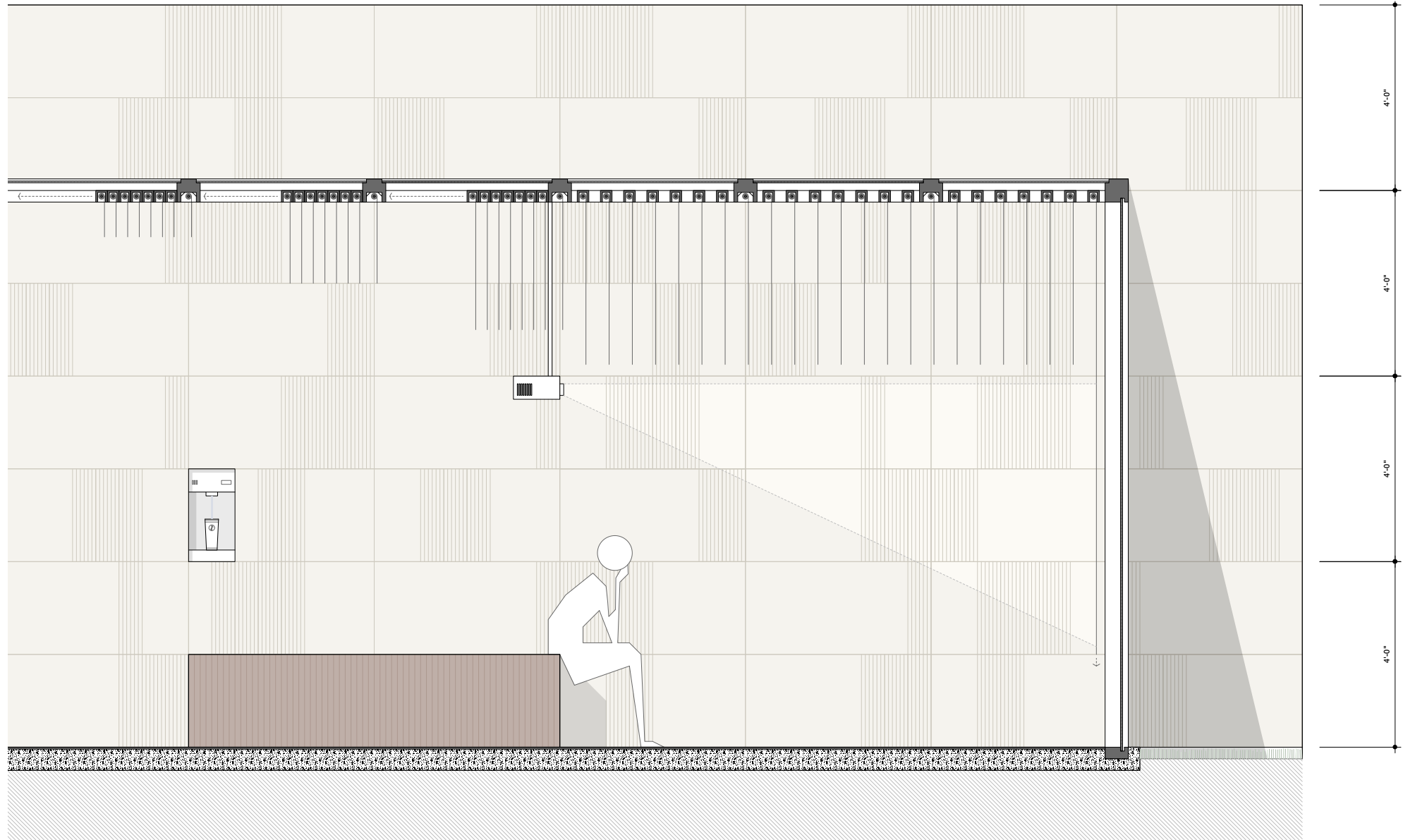
Interior Area: 57,312 sq. ft. (5,324 m²)

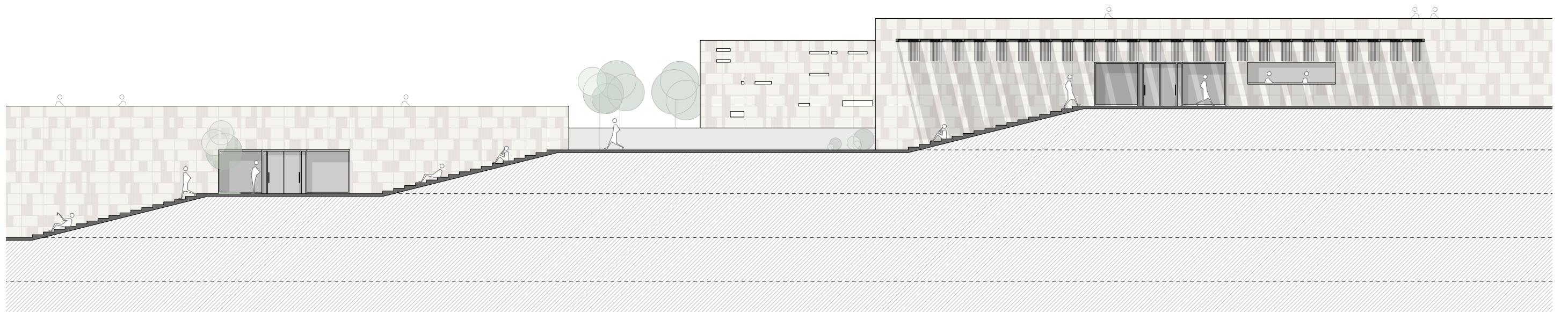
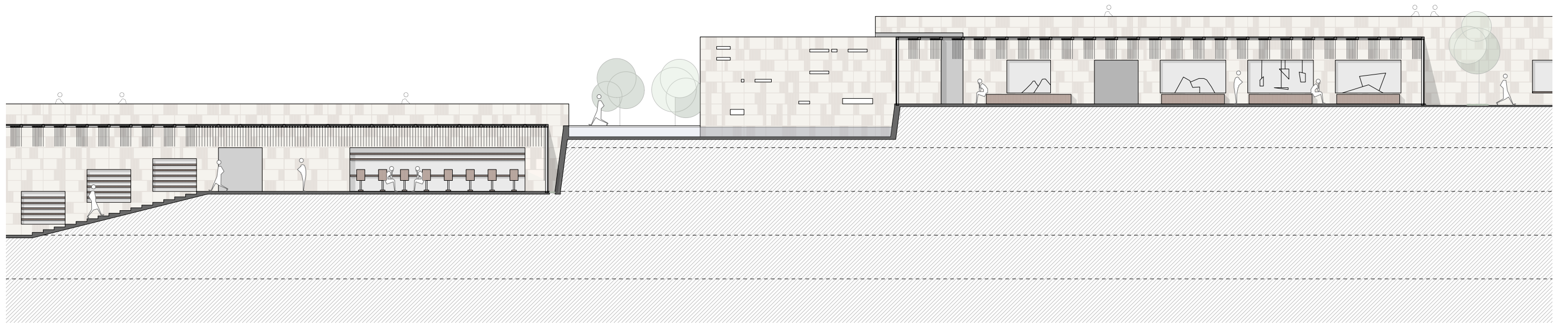
The Monticello Innovation Center is a project that serves as an extension of Monticello High School and a community college, offering programs for members of the community to learn about Advanced Manufacturing, Hospitality, and Agribusiness. The building's spaces are designed to provide "mock" spaces of real-life environments of these industries to encourage hands-on learning.

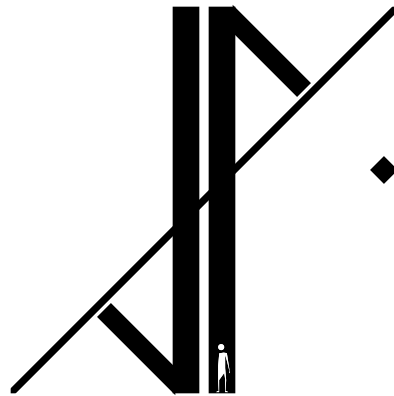
The concept behind this design is incorporating all functional and mechanical aspects into the walls, by "carving" necessary elements into the walls themselves or placing them between a pair of walls. Placing functions into the building's walls define spaces, which in turn define its programs.











DANIEL PEMUELLER

FOR MORE PROJECTS, PORTFOLIOS, AND SKETCHES VISIT

PEMUELLER.COM