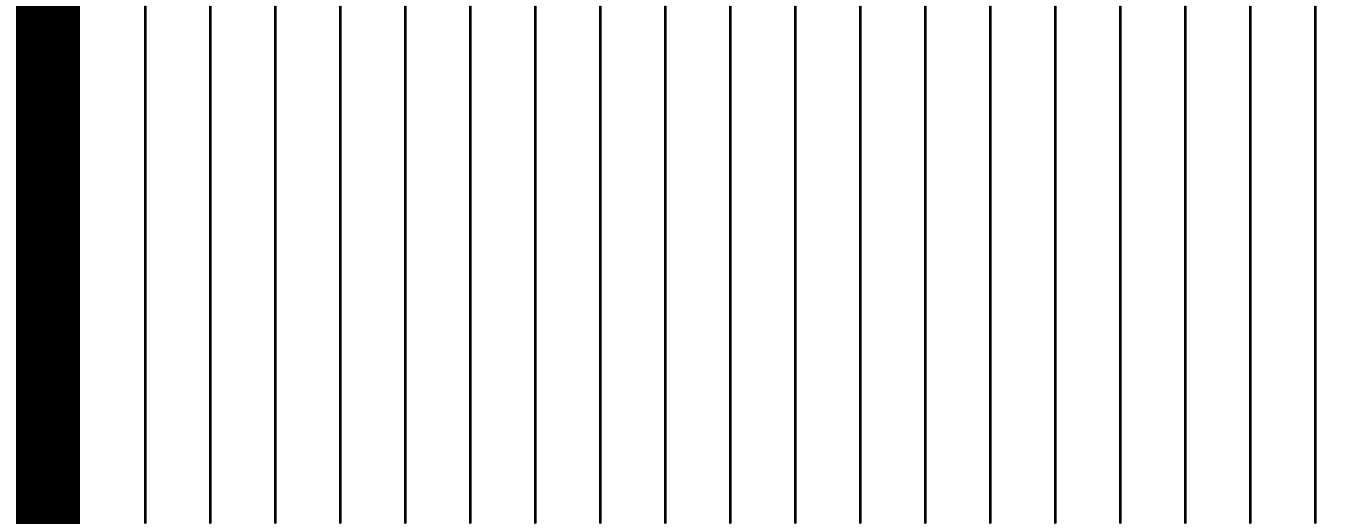


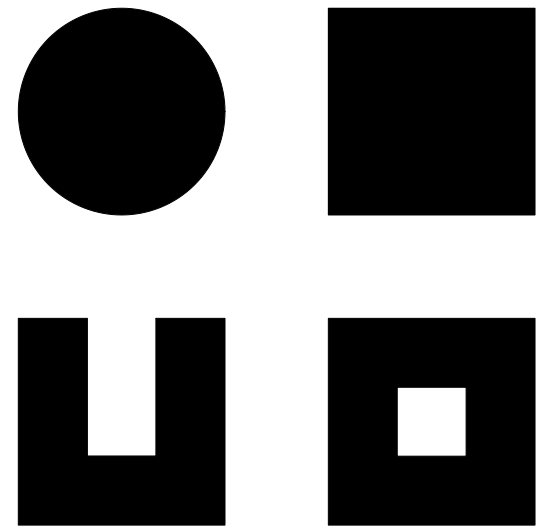
**ARCHITECTURE**

# **PORTFOLIO**



**DANIEL PEMUELLER**

**2021 – 2022**



# CONTENTS

01 RIVANNA PAVILION

02 INTERNATIONAL CUISINE CENTER

03 INTROVERTED HOUSE

04 MODULE COMPLEX

# 01 RIVANNA PAVILION

October 2021

University of Virginia School of Architecture

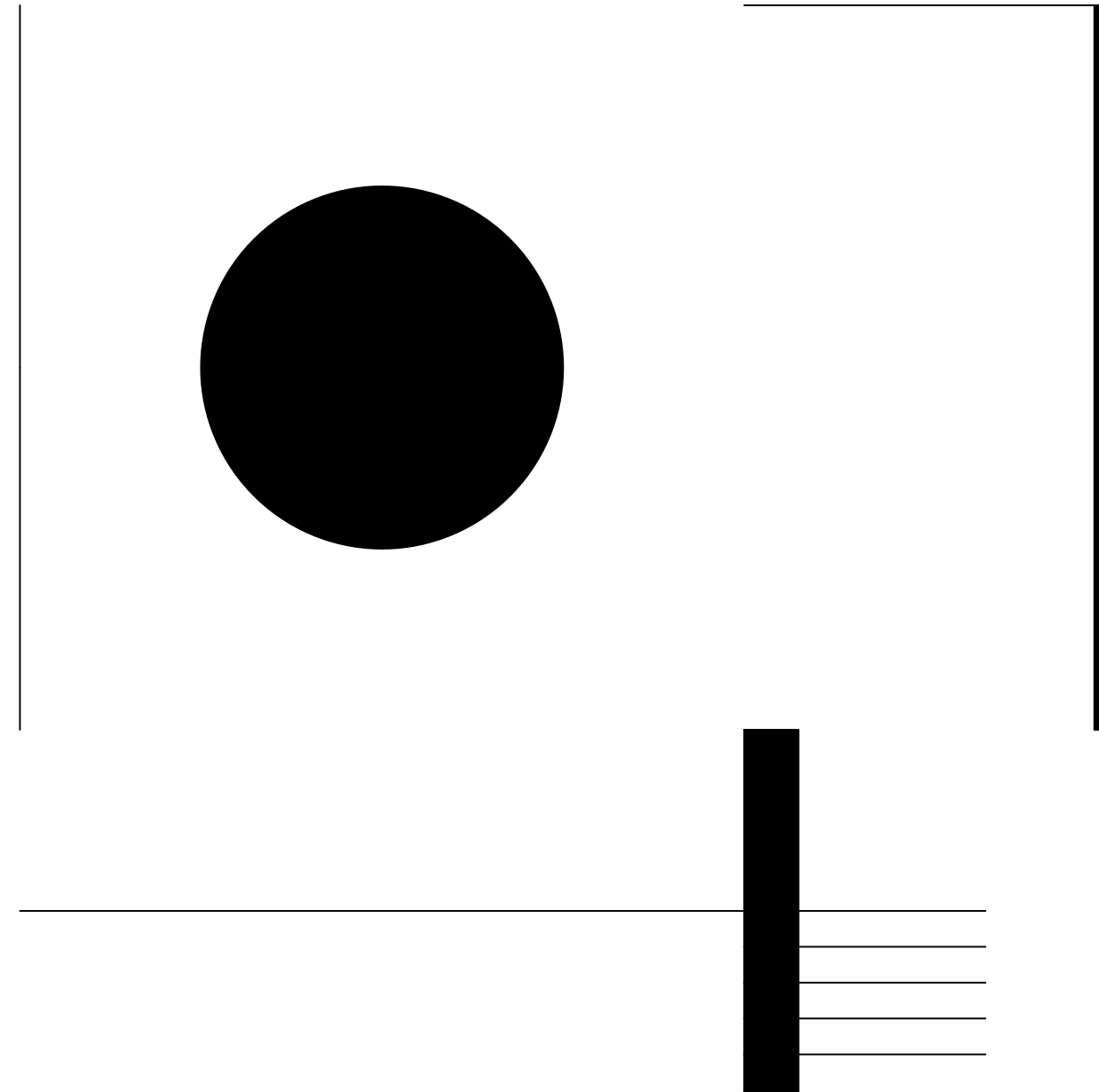
Foundation Studio II

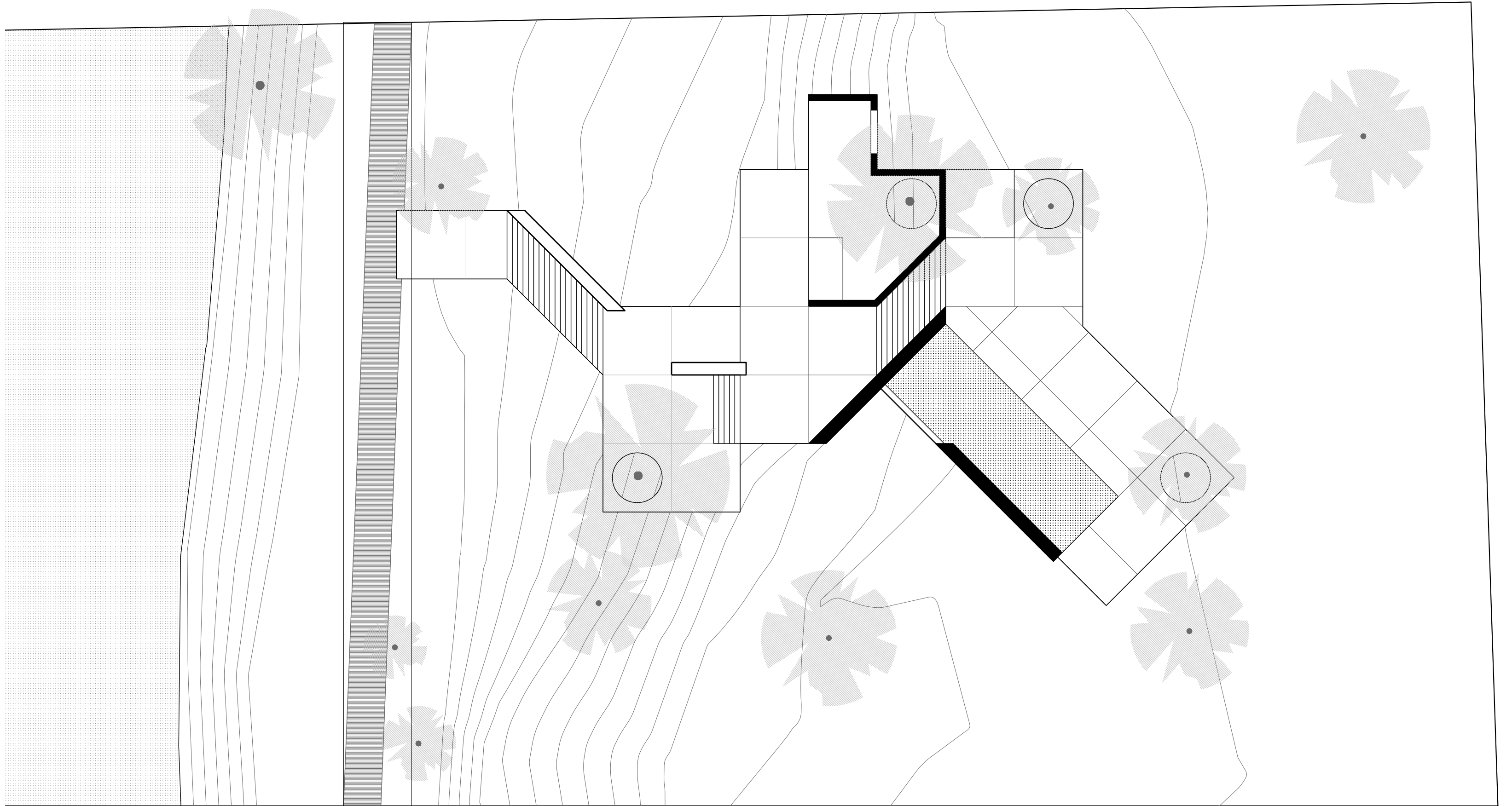
Medium: Rhino 7

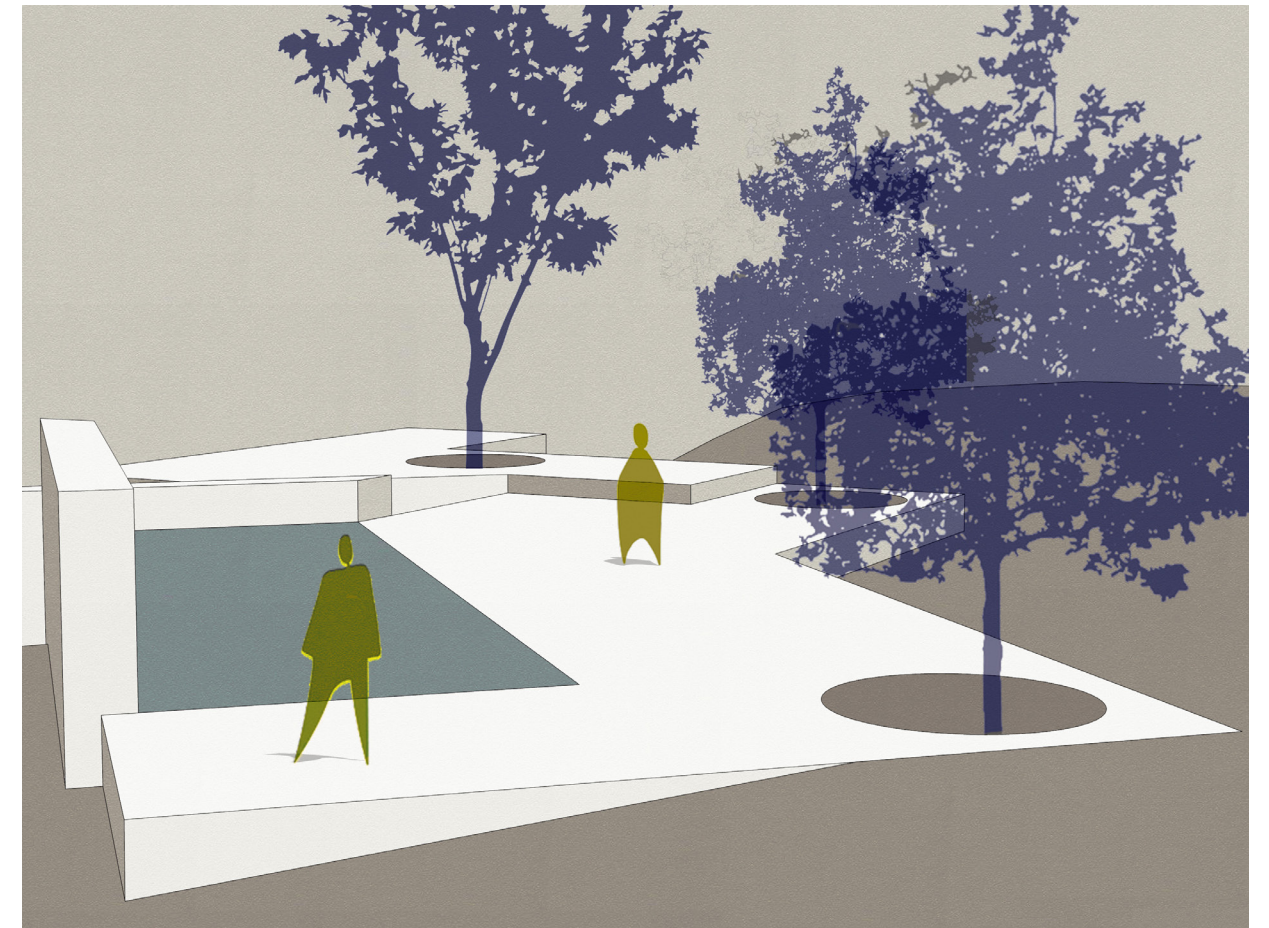
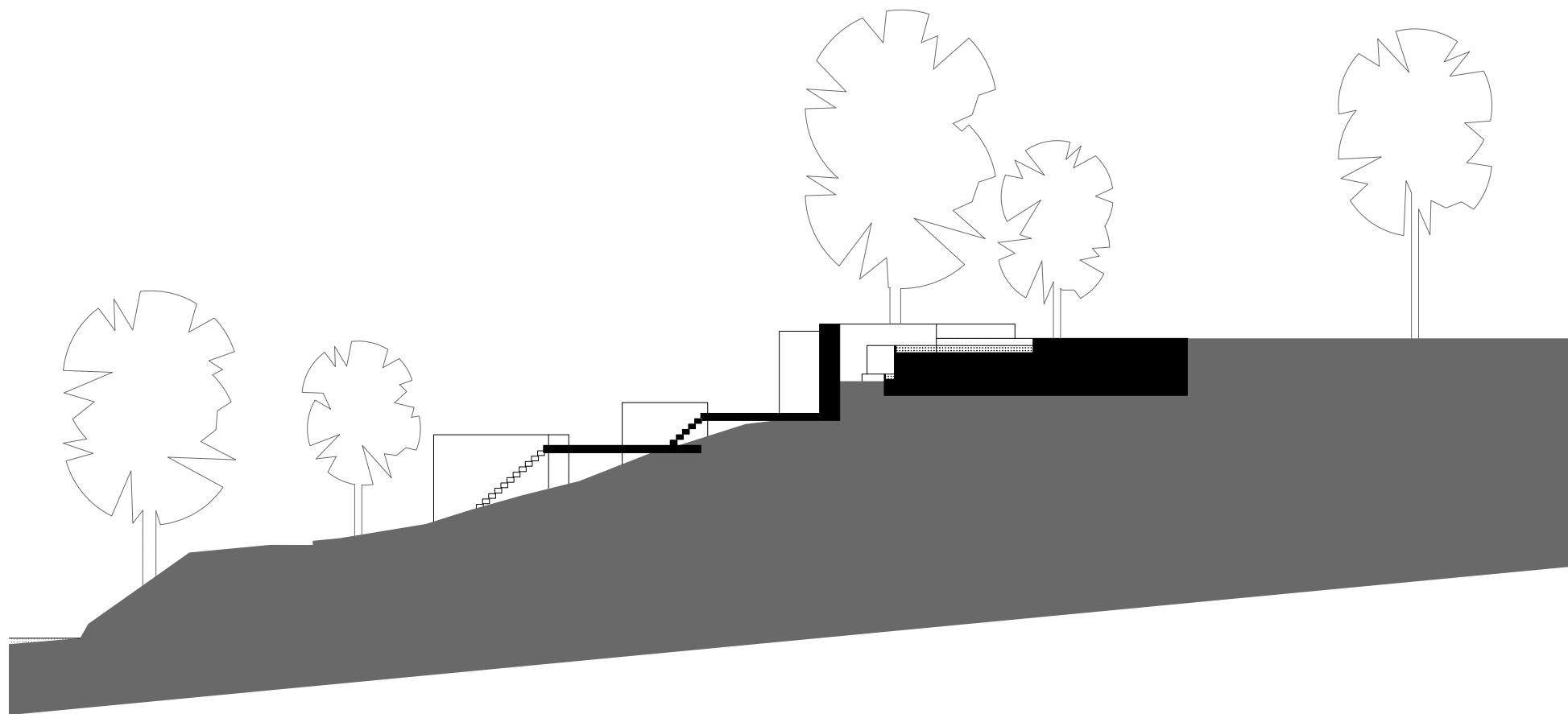
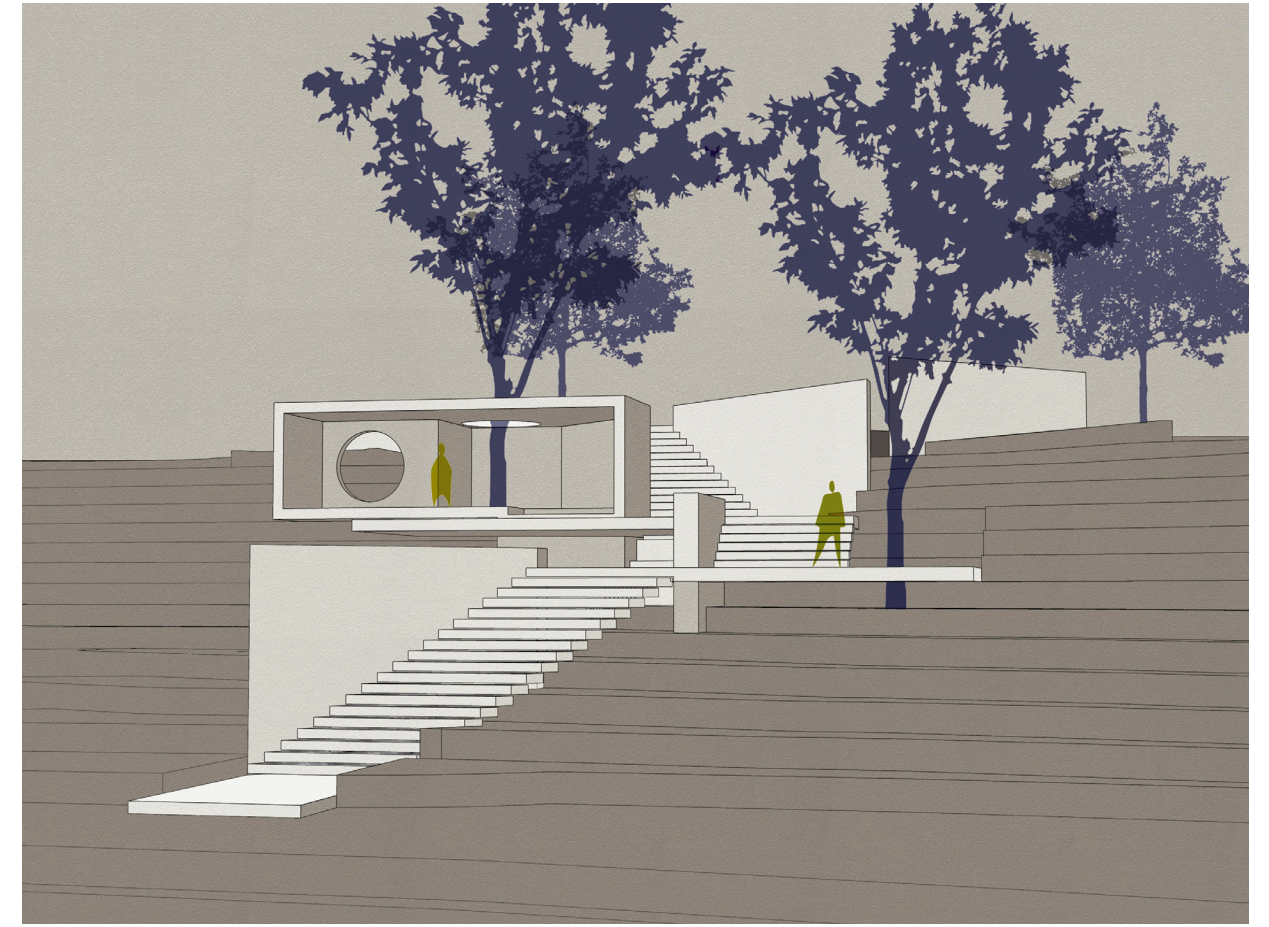
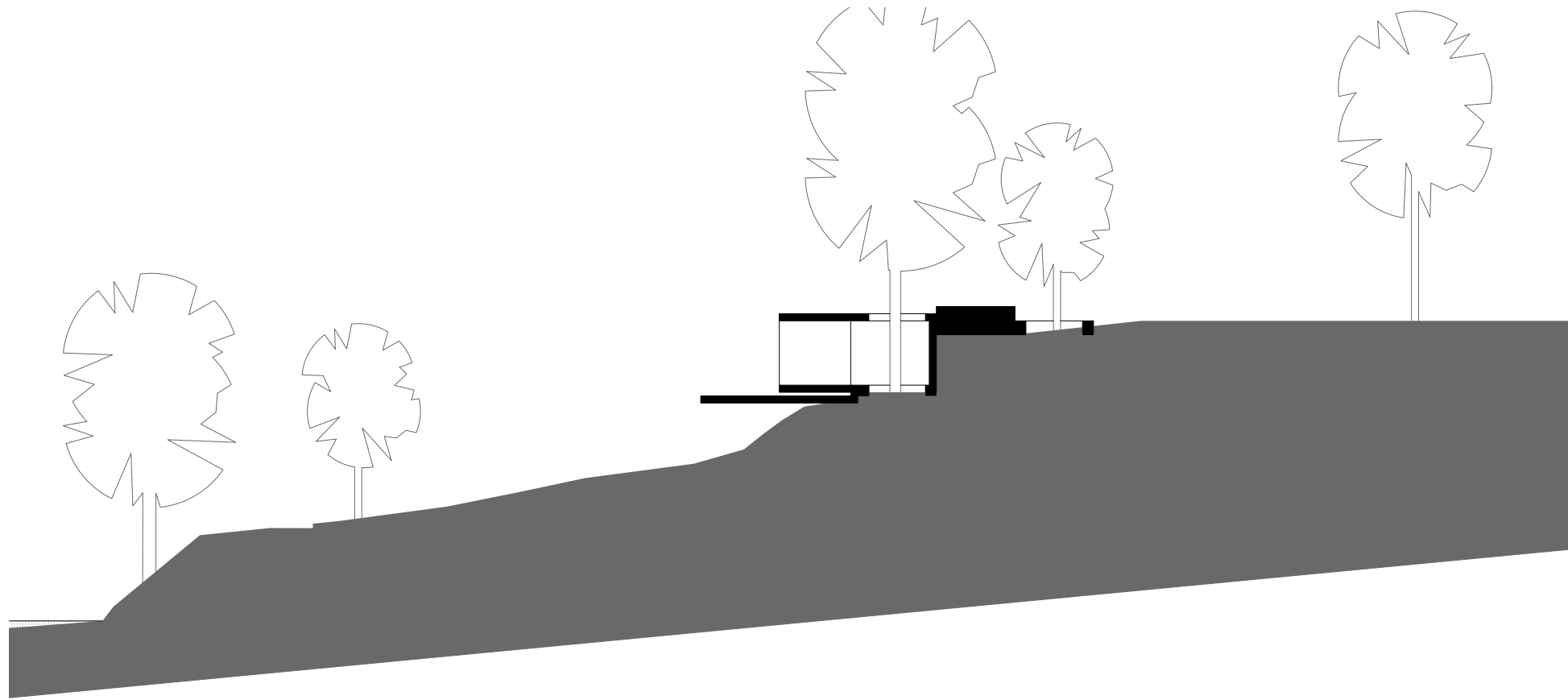
This project consists on a design for a pavilion located on the Rivanna River. The design process for **this pavilion connects the most vital parts of the environment within the site — its trees.** The first step in doing this was to find formal relationships between the trees in the site and how they are aligned with each other. Once these relations were outlined, the trees that held the strongest connection were to be given direct access through the pavillion. After a general layout was done, the topography of the site was taken into account. While the steep terrain brought some structural limitations, it also provided opportunity to build and interior space along the general path. What is left as the final product is a pavilion that guides visitors along a series of interconnected trees. **This project doesn't seek to hide and immitate its surroundings but rather aims to bring an admiration for the envirotnment where it finds itself.**

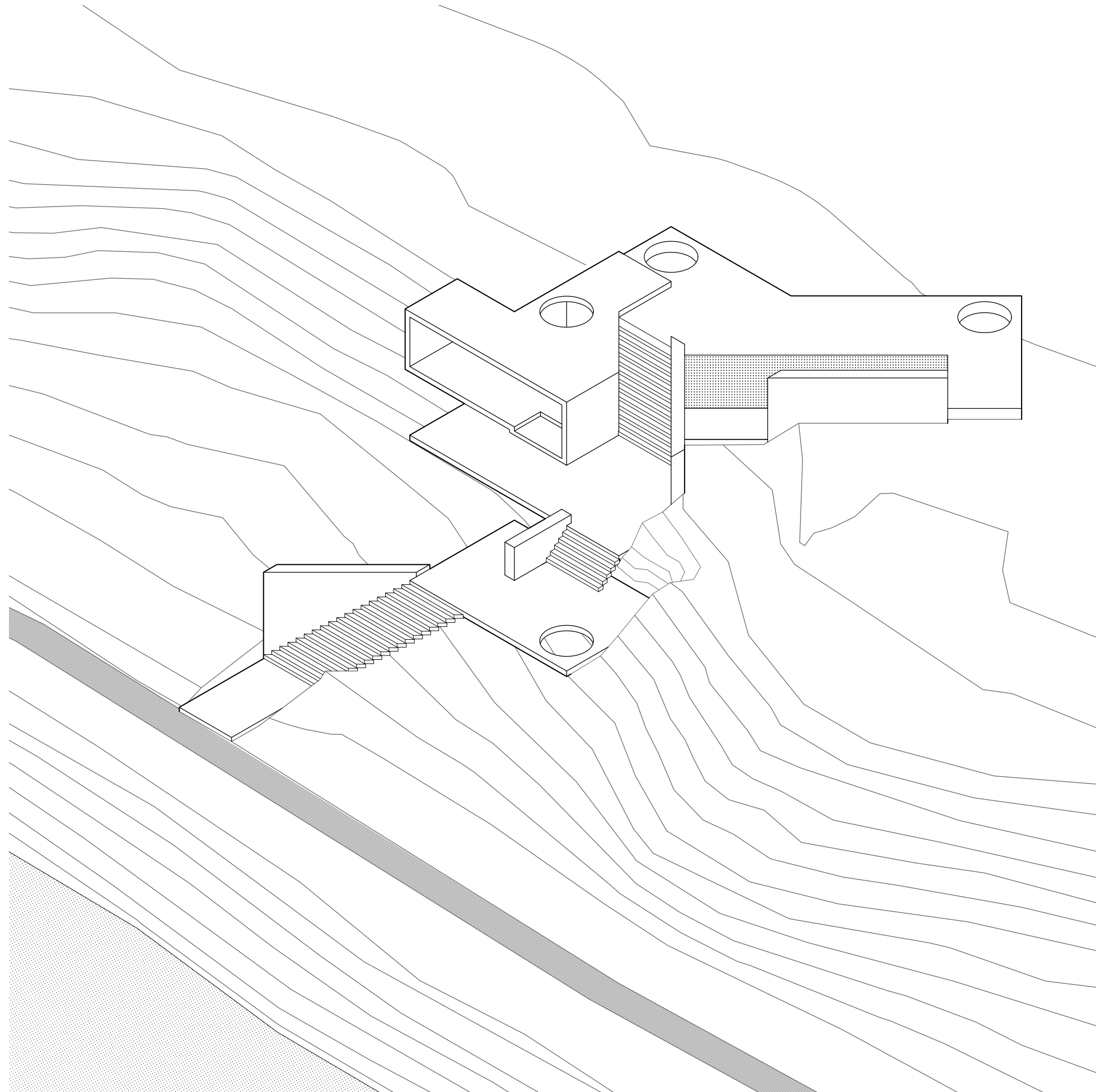
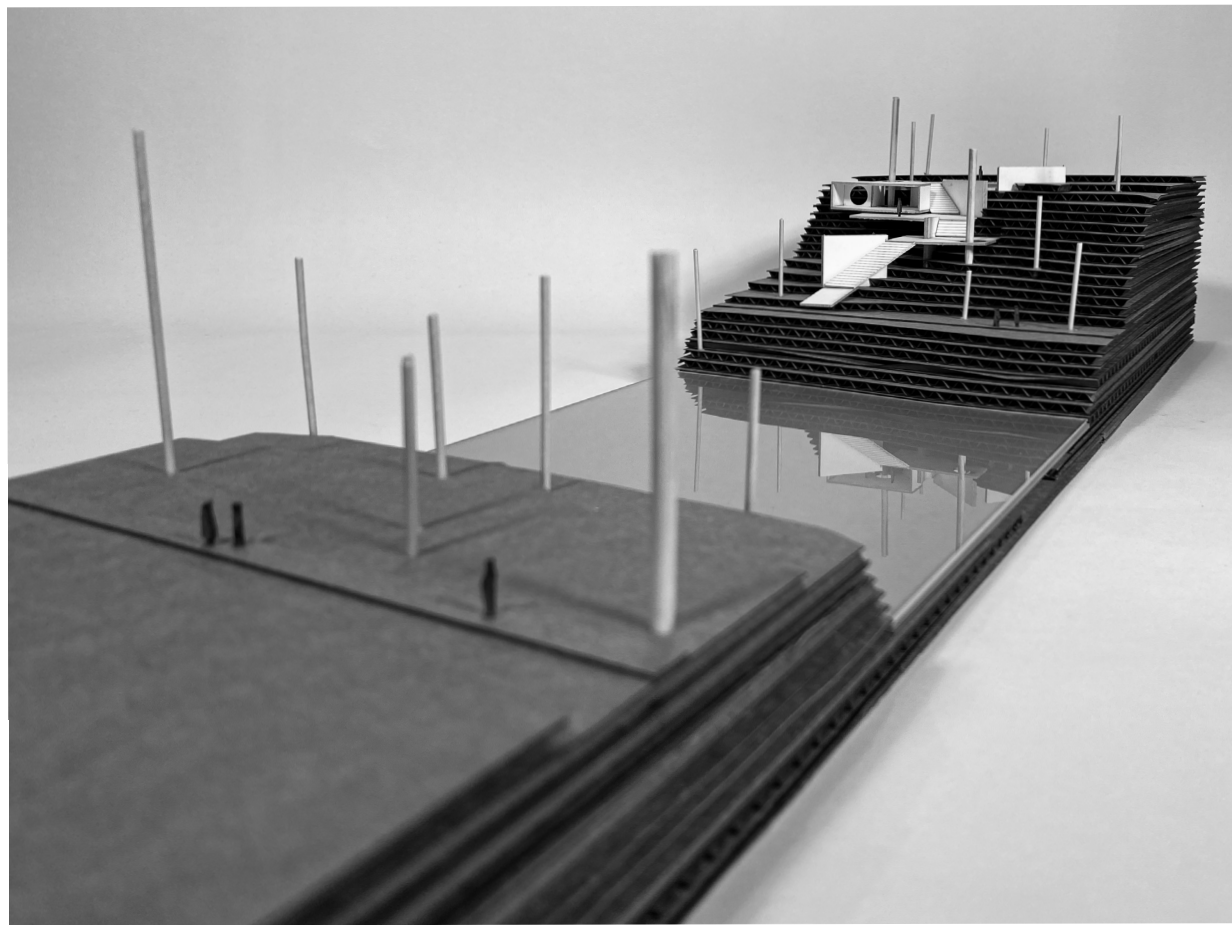
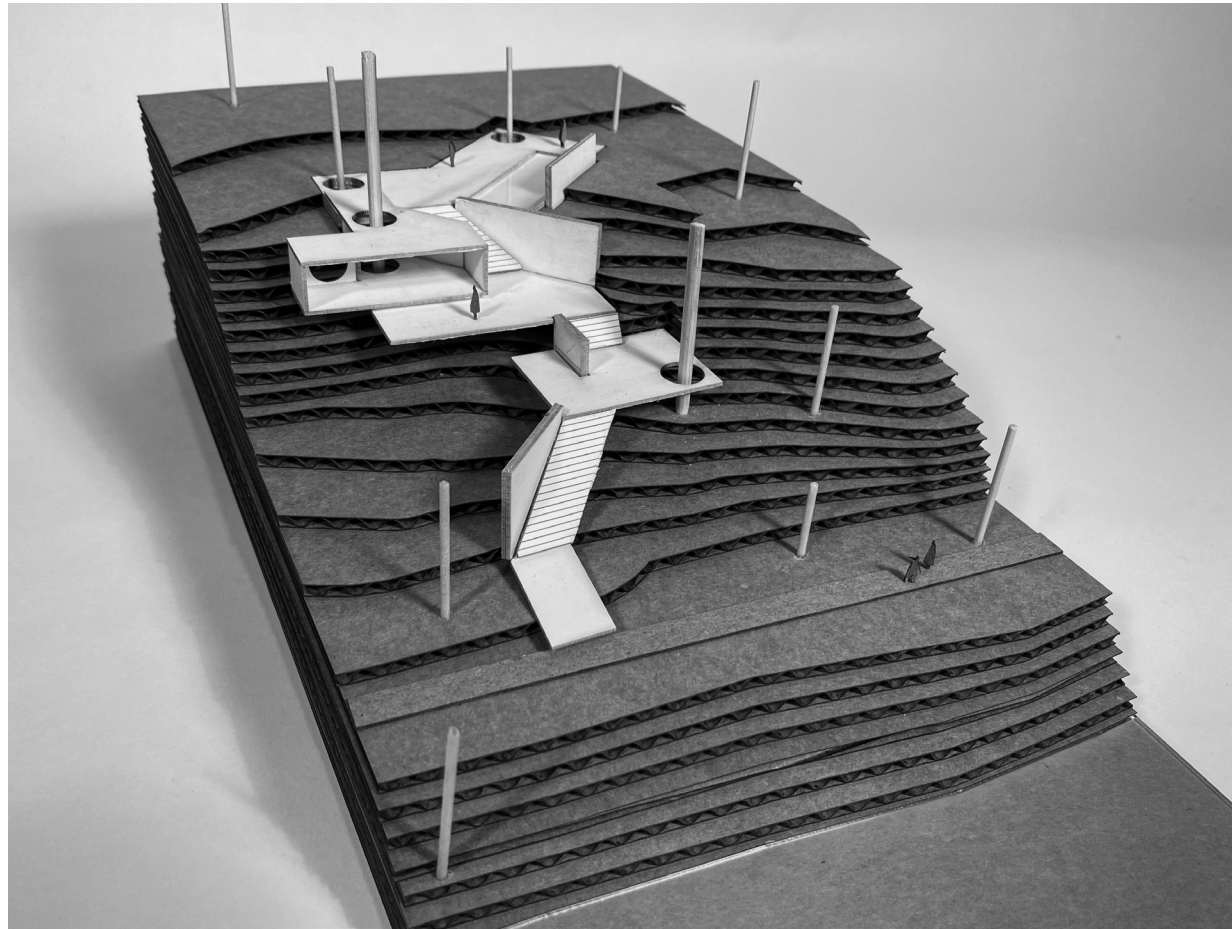
**Terrain Area:** ~ 27,220 ft<sup>2</sup> (2,529 m<sup>2</sup>)

**Built-Up Area:** 3,976 ft<sup>2</sup> (369 m<sup>2</sup>)









# 02 INTERNATIONAL CUISINE CENTER

December 2021

University of Virginia School of Architecture

Foundation Studio II

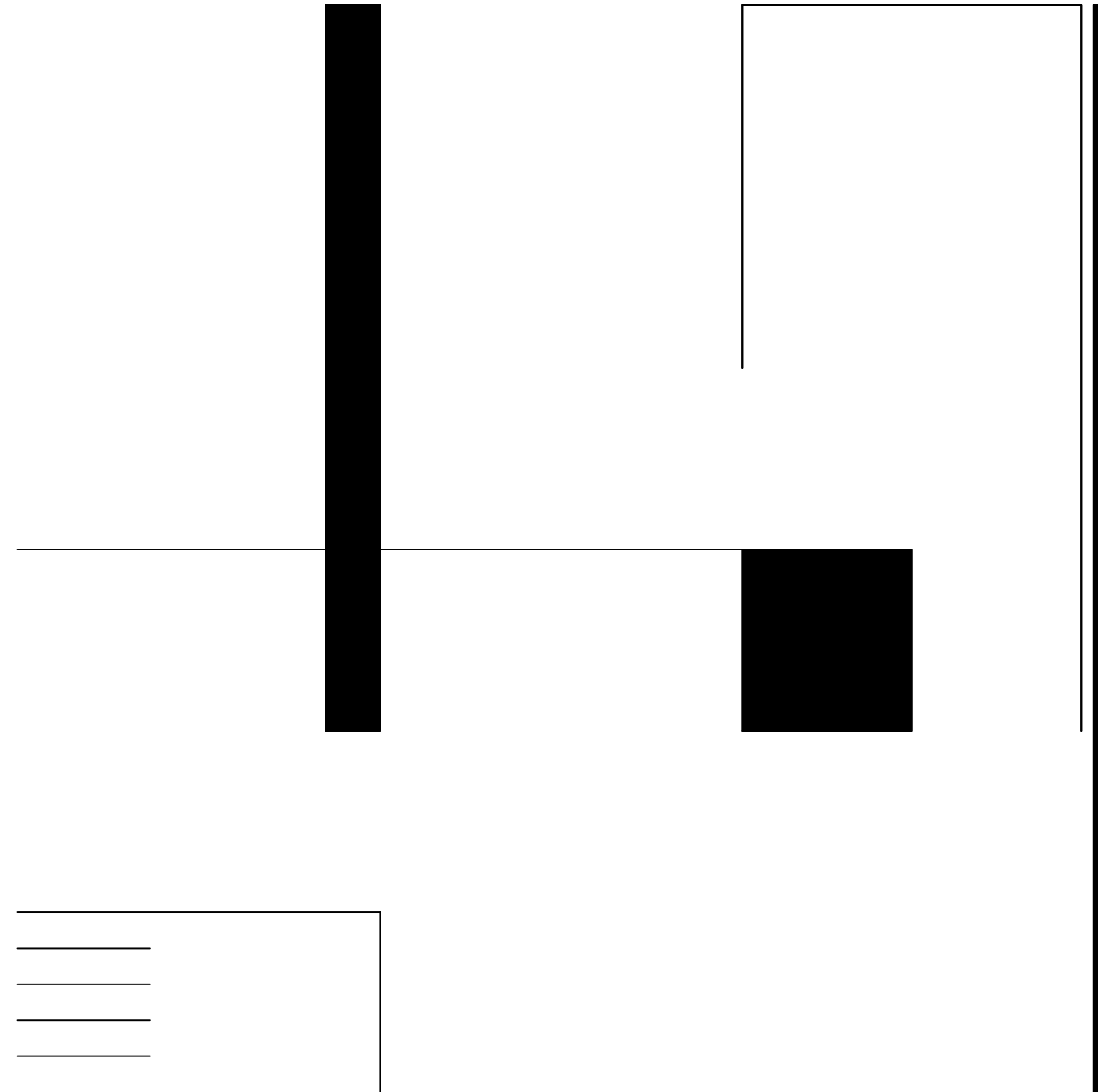
Medium: Rhino 7

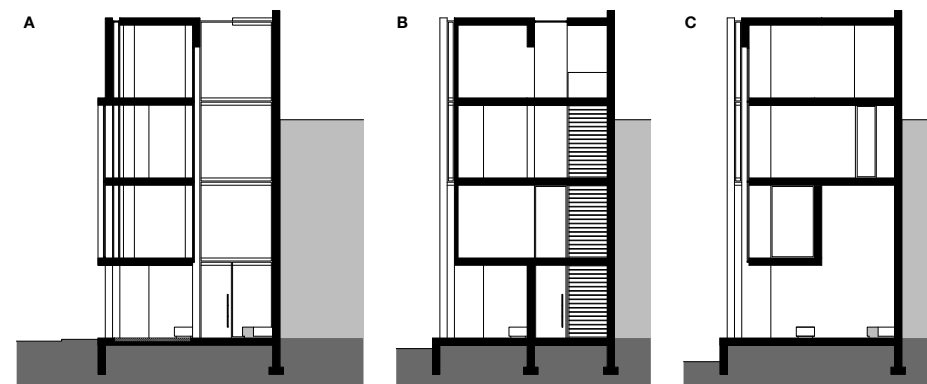
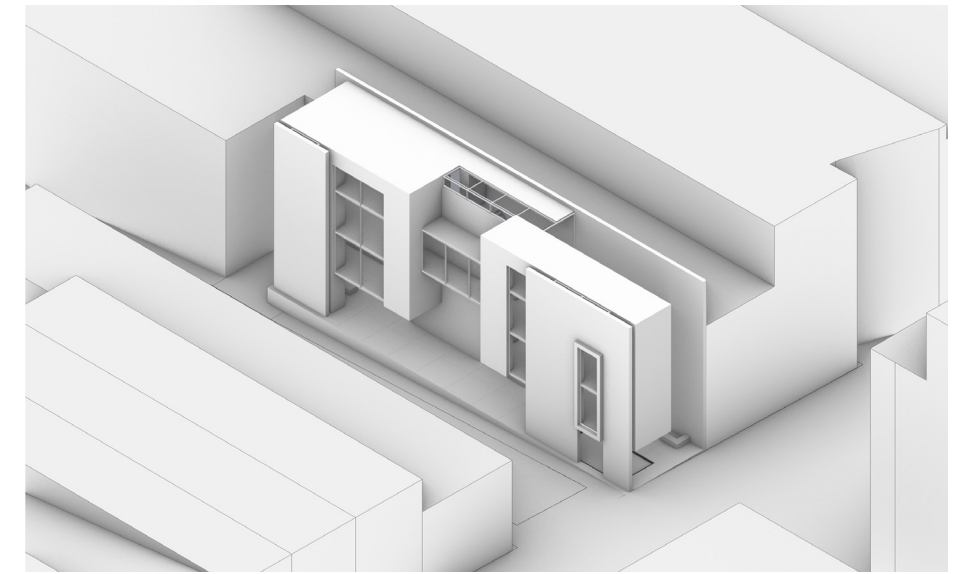
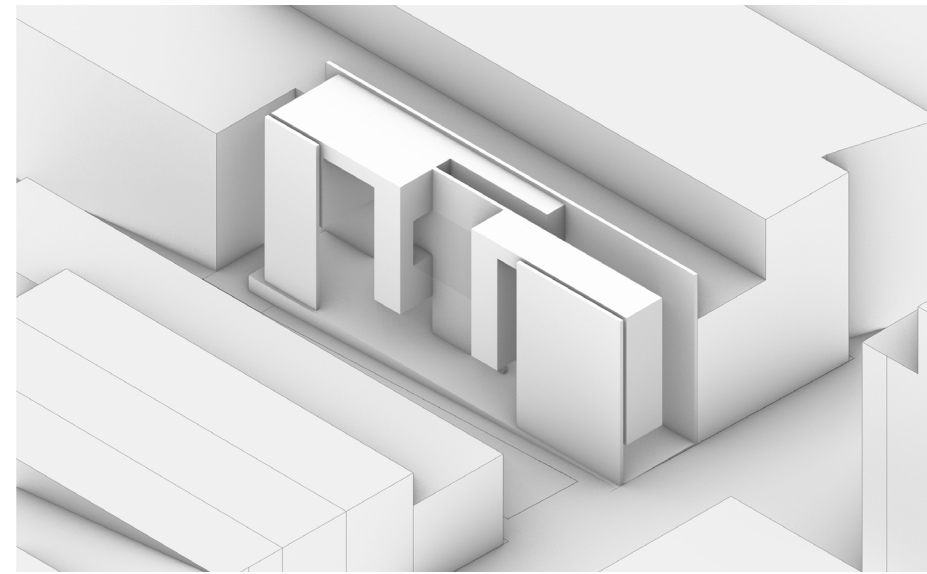
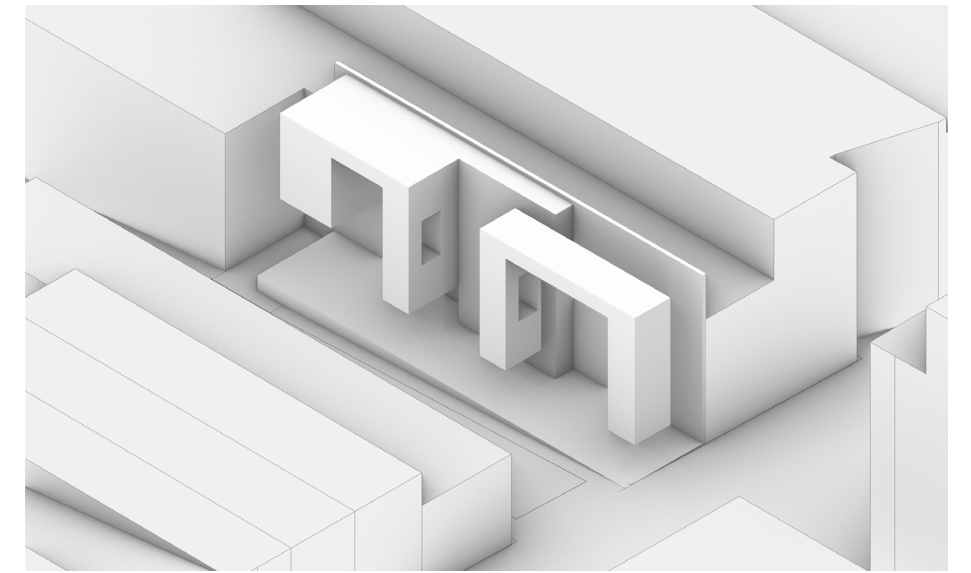
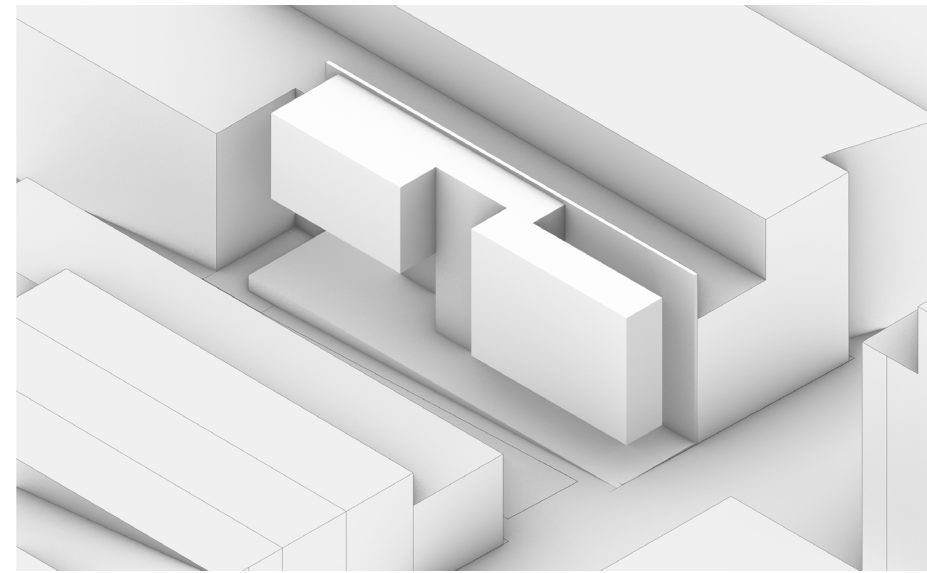
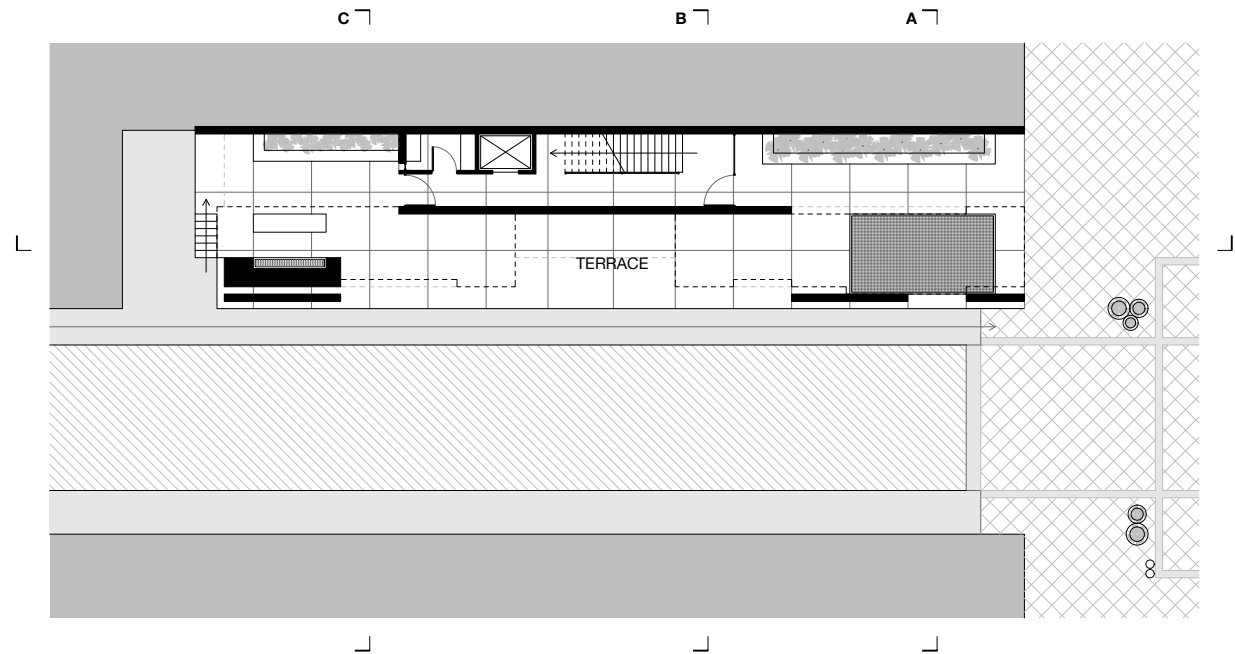
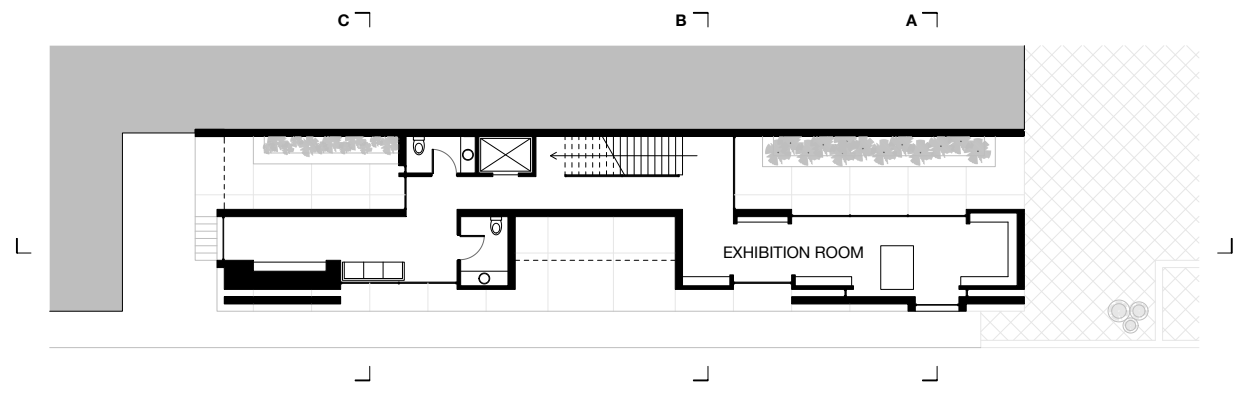
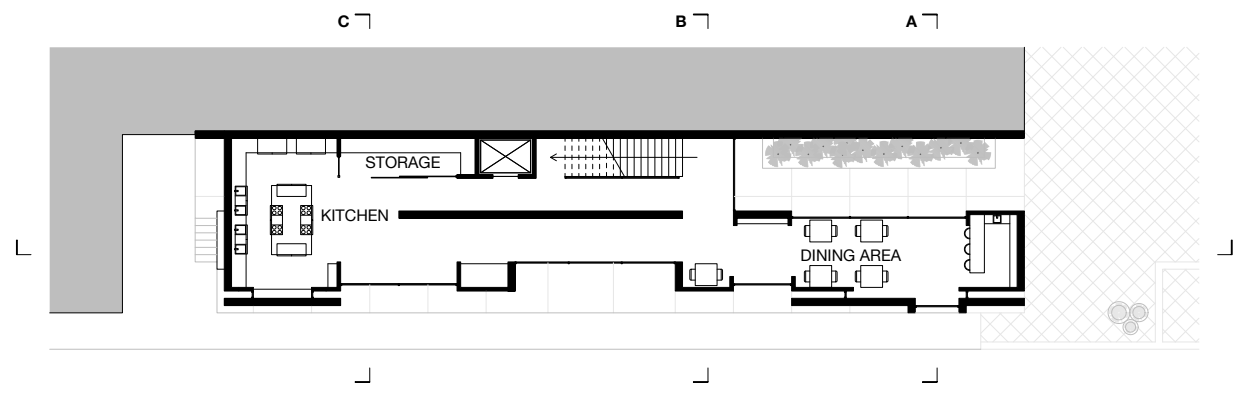
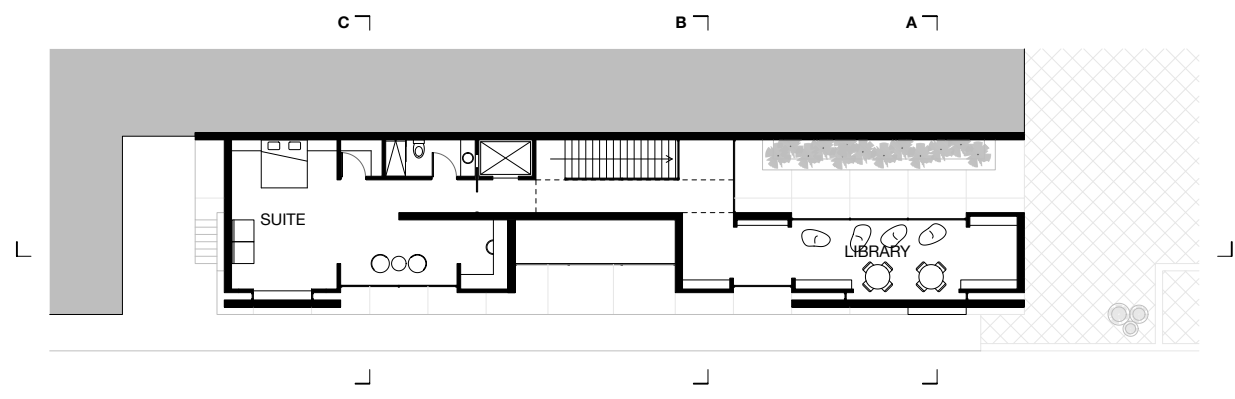
This project consists of a design for a culinary institute located in Charlottesville's Downtown Mall. Because much of Charlottesville's gastronomic scene is focused on its local cuisine, this project aims to increase the interest in international food. **The idea is to bring in a chef from a specific country or region from abroad and have them put together an exhibition of their local cuisine** as well as temporarily managing the building's kitchen staff to allow visitors to try their native food. To make this possible, the building comes with a dedicated exhibition room, and a fully equipped kitchen and storage room. To ensure the visiting Chef has a pleasant stay, the place also houses a suite. A dining area and small library are also included to visitors to enjoy.

One of the challenges that came with the design of the building was to make the most out of the narrow area given to work with. The conceptual design of the building consists on the arrangement of volumes put up against a division wall. Each of these volumes is intended to house the previously mentioned areas, each with their specific function. Facing towards the Downtown Mall are the exhibition room, dining area, and library, the places intended to be the most public. Towards the back are the kitchen and suite, which are meant to be more private. One of the ideas behind the design, however, is to promote peaceful and collaborative environment, which is why the place also encourages circulation throughout and faces its interior wall in some areas.

**Terrain Area:** 2,736 ft<sup>2</sup> (254 m<sup>2</sup>)

**Built-Up Area:** 4,890 ft<sup>2</sup> (454 m<sup>2</sup>)











# 03 INTROVERTED HOUSE

February 2022

University of Virginia School of Architecture

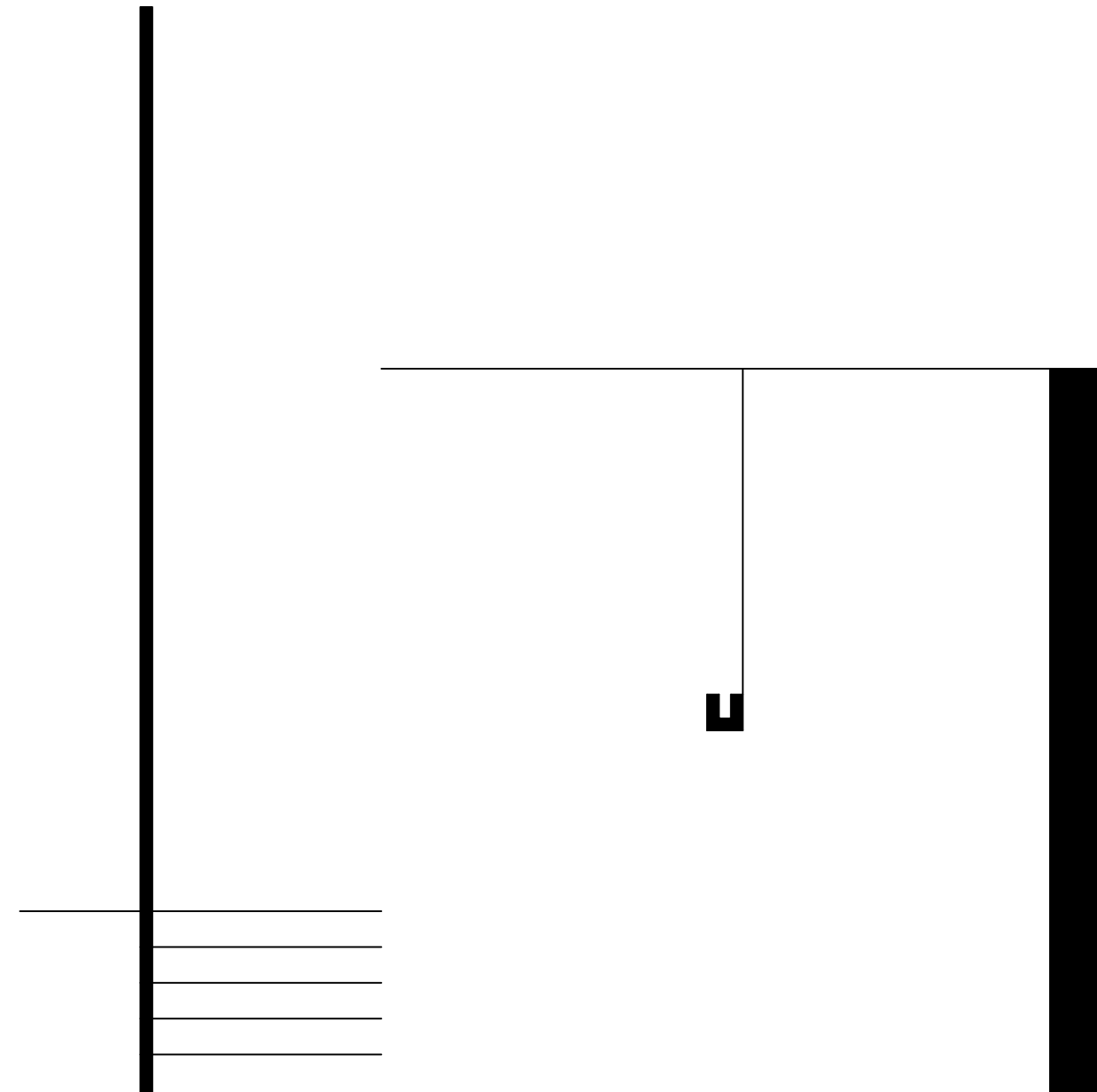
Foundation Studio III

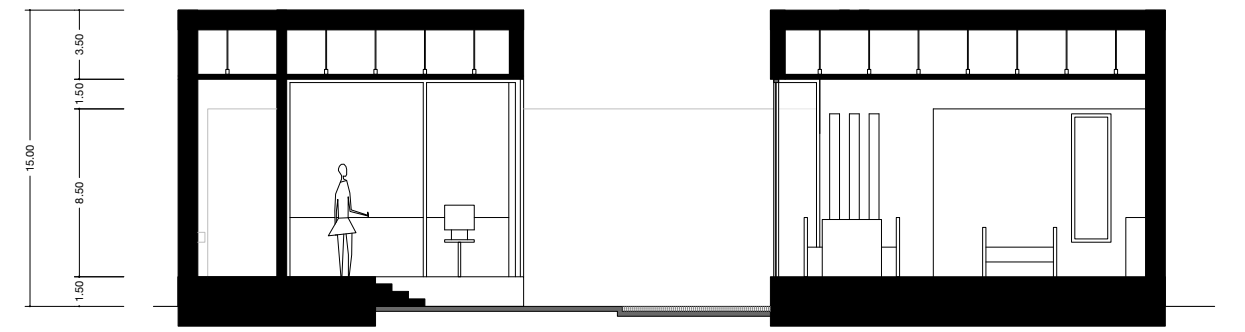
Medium: Rhino 7

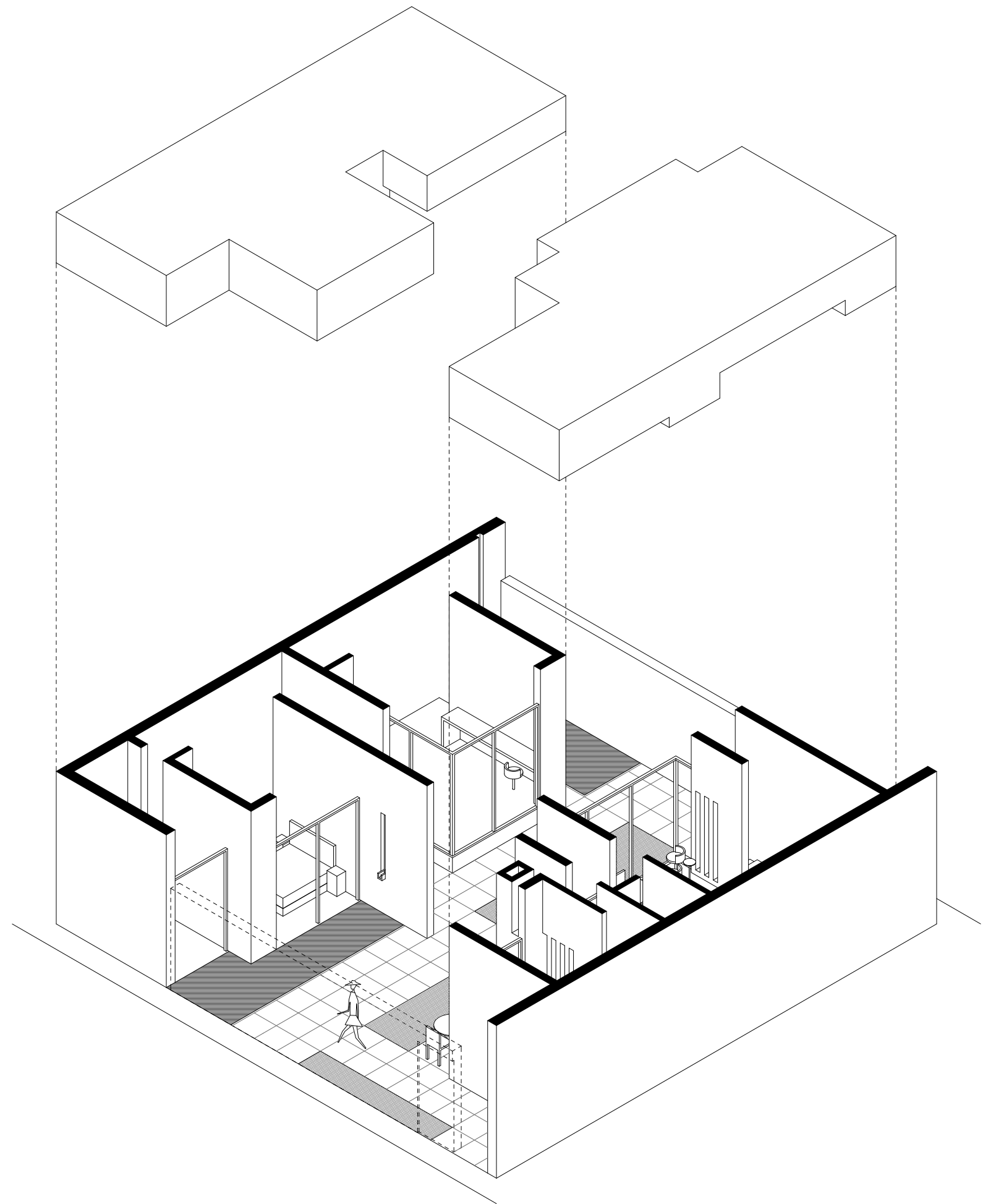
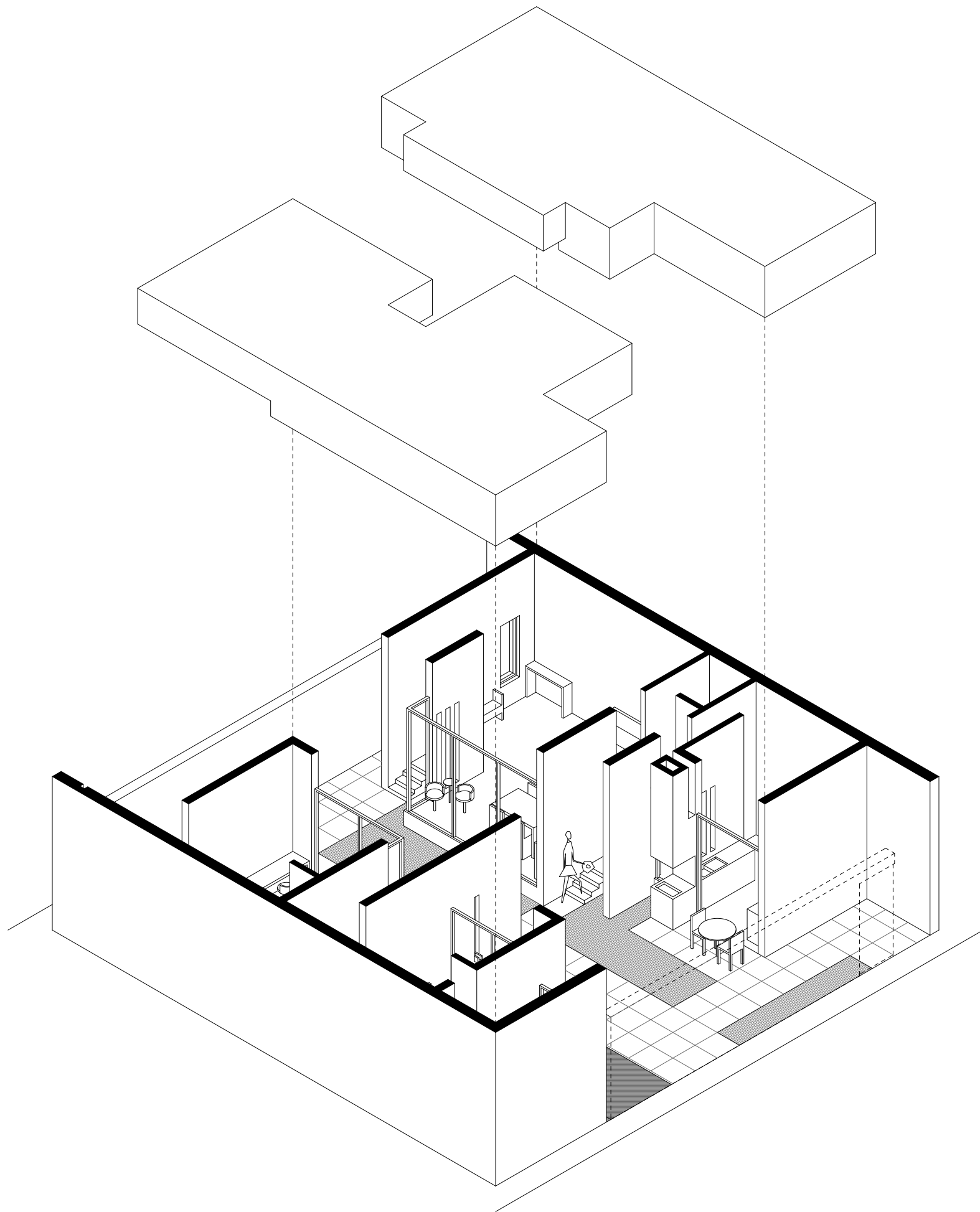
This project consists on a design for a home, situated on a square-shaped terrain, alongside the neighboring projects of my classmates. The design uses of a grid of 2.5' x 2.5' modules that dictate the spaces throughout the property. Placed along the modules are the walls, wich have a vertical alignment perpendicular to the division walls. This is done to favor a North-South orientation and also maximize circulation and openness in a rather enclosed area. **Because all sides of the terrain face toward neighboring projects, the house is oriented onto itself.** The "introverted house" has its public spaces in the North side, consisting of a social area, guest bathroom, and kitchen. In the South side, the private areas are found, which include a master bedroom and a studio. The public and private spaces are connected by an outdoor terrace with gardens and reflective pools. The enclosed yet open nature of the house provides a calming environment to whoever resides in it.

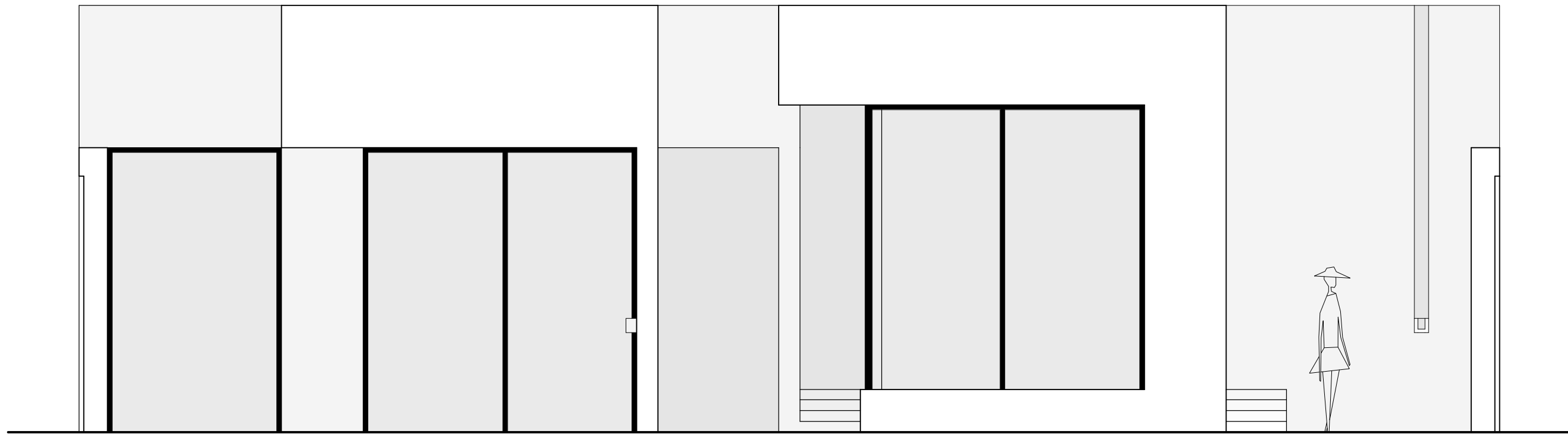
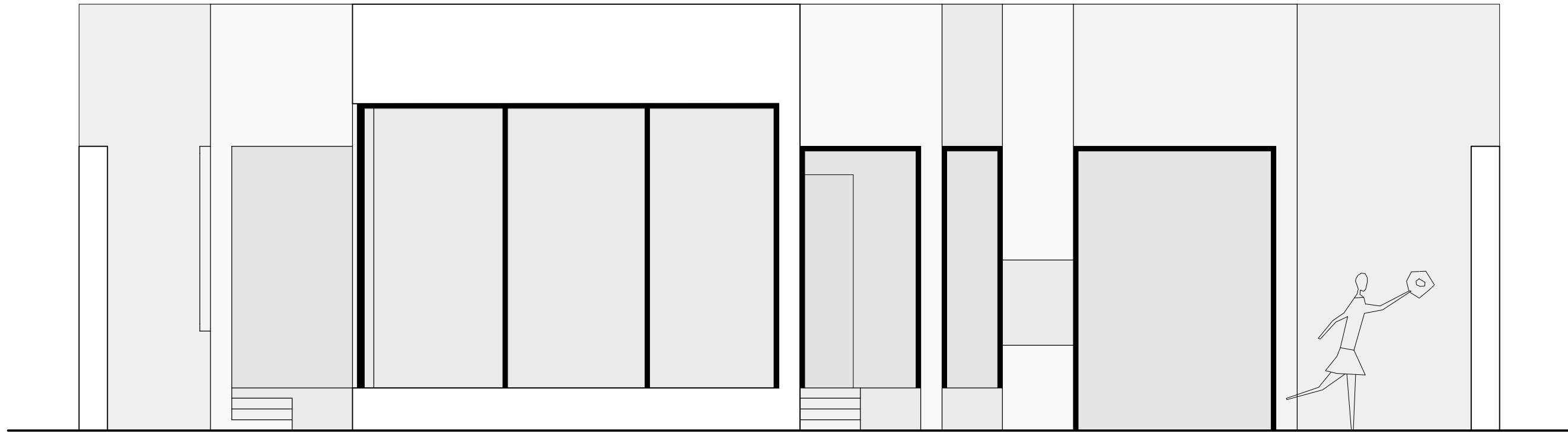
**Terrain Area:** 2,500 ft<sup>2</sup> (232 m<sup>2</sup>)

**Built-Up Area:** 1,094 ft<sup>2</sup> (102 m<sup>2</sup>)









# 04 MODULE COMPLEX

May 2022

University of Virginia School of Architecture

Foundation Studio III

Medium: Rhino 7

Situated in Richmond, Virginia, this housing complex aims to create a sense of community in a place where this atmosphere is not so apparent. The plot of land on which the project is located lies in between a parking lot and utility stores. The challenge of this project was **creating a welcoming atmosphere that makes people want to live in the area**. In designing such a place, it is important to bring a strong sense of community. There are three components that create such an environment: **live, work, and rest, together**. The complex's design allows this by providing a series of communal areas throughout its 13 stories, including a library, gym, terrace, conference room, and pool area. Perhaps the most distinguishable feature of the building is its façade, which is made up of a series of movable panels that allow for each apartment to have its right amount of privacy throughout the day, while also allowing them to be open towards the outside.

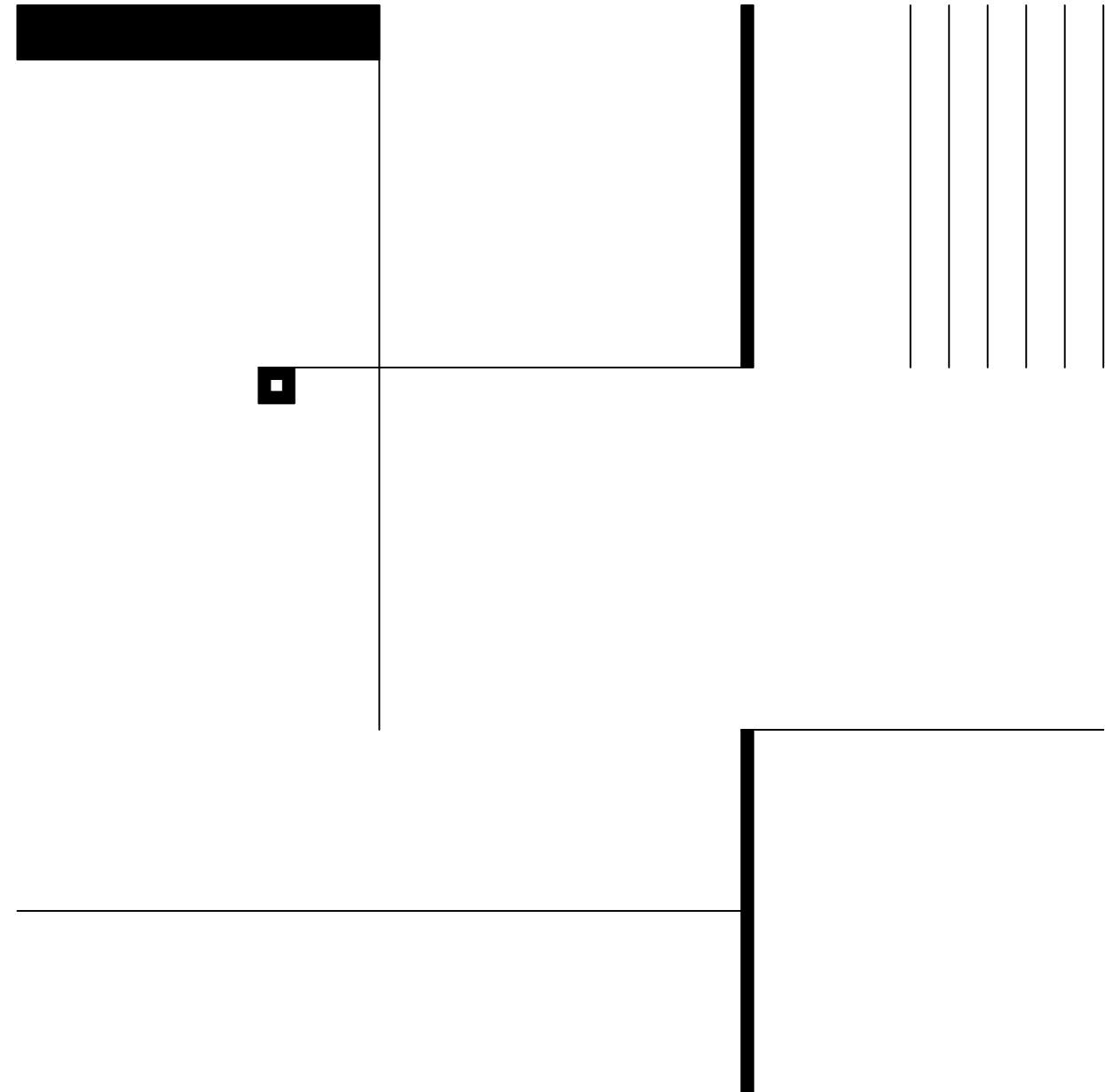
**Total Units:** 42 (A = 24 | B = 18)

**Unit Area:** A = 1,625 ft<sup>2</sup> (150 m<sup>2</sup>) | B = 2,437 ft<sup>2</sup> (226 m<sup>2</sup>)

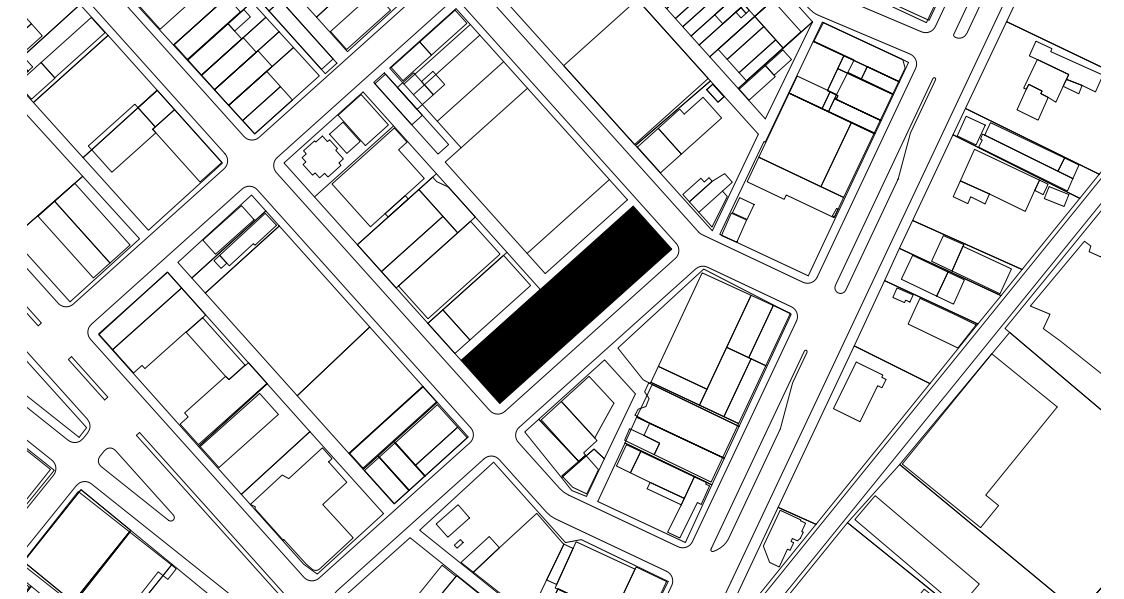
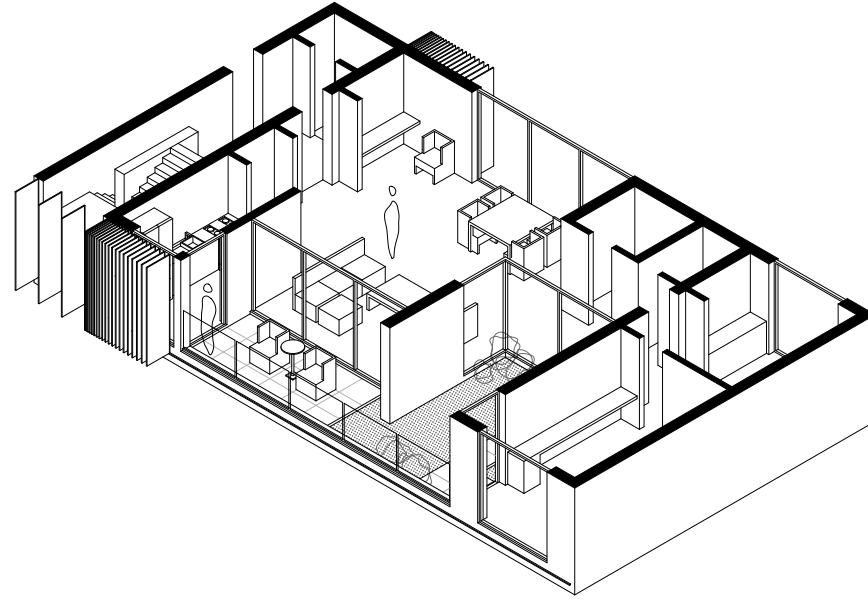
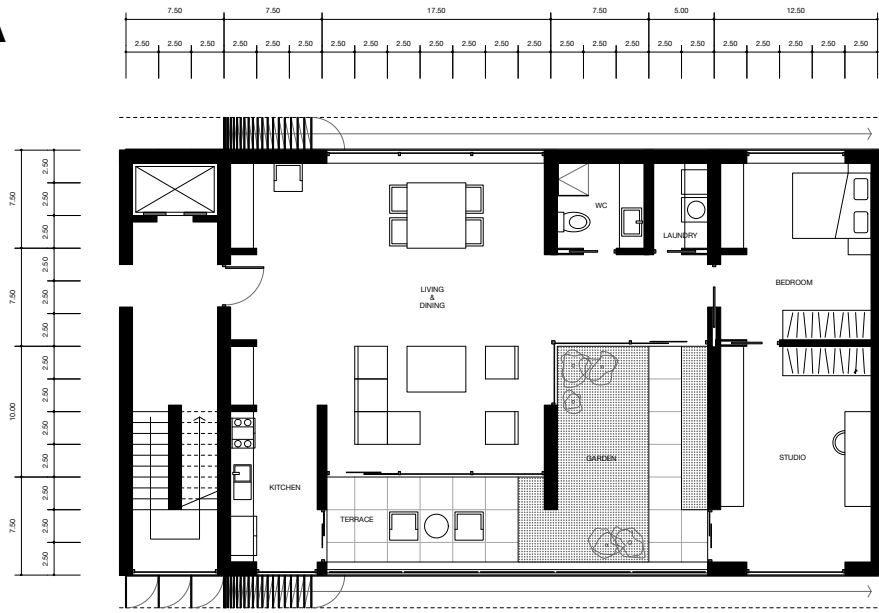
**Building Floor Area:** 9,262 ft<sup>2</sup> (860 m<sup>2</sup>)

**Terrain Area:** 32,400 ft<sup>2</sup> (3,010 m<sup>2</sup>)

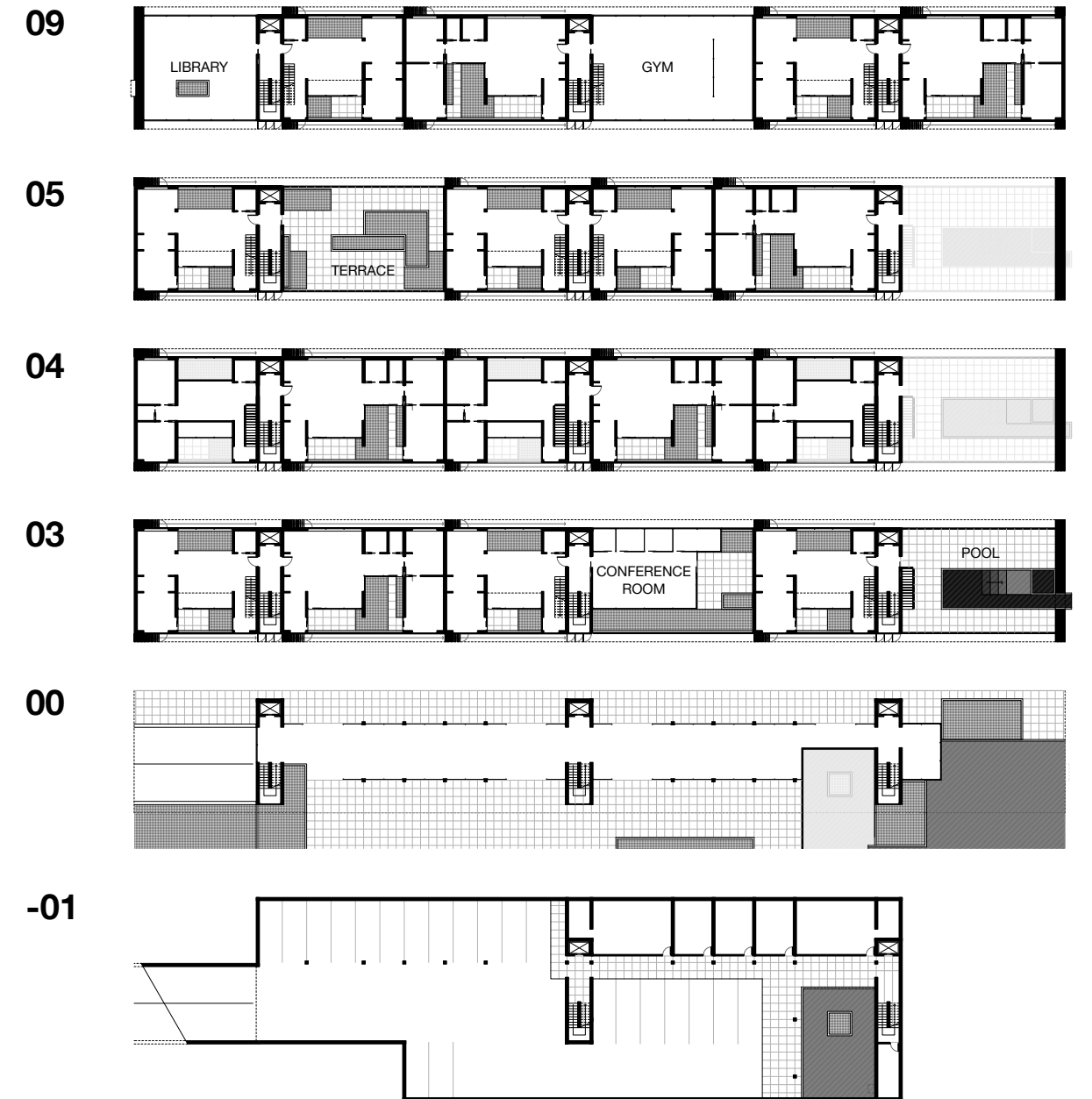
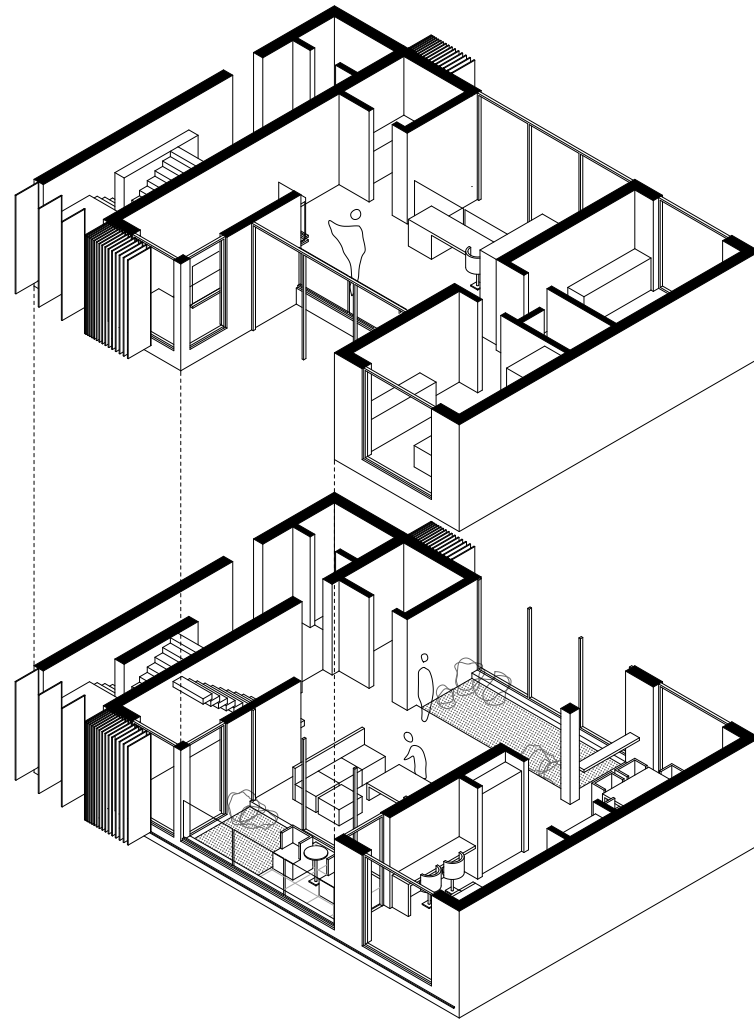
**Built-Up Area:** 129,390 ft<sup>2</sup> (12,021 m<sup>2</sup>)



**Unit A**

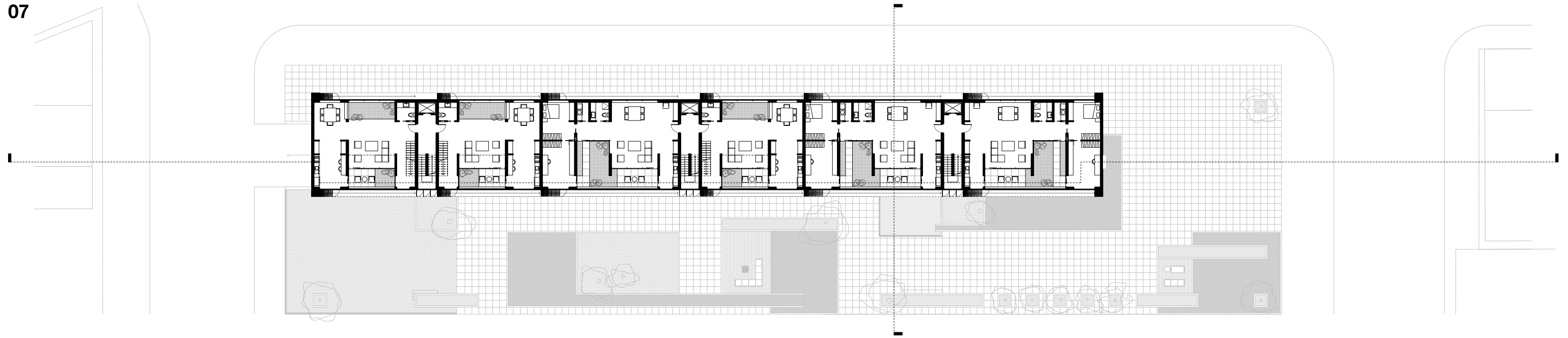


**Unit B**





07



00

