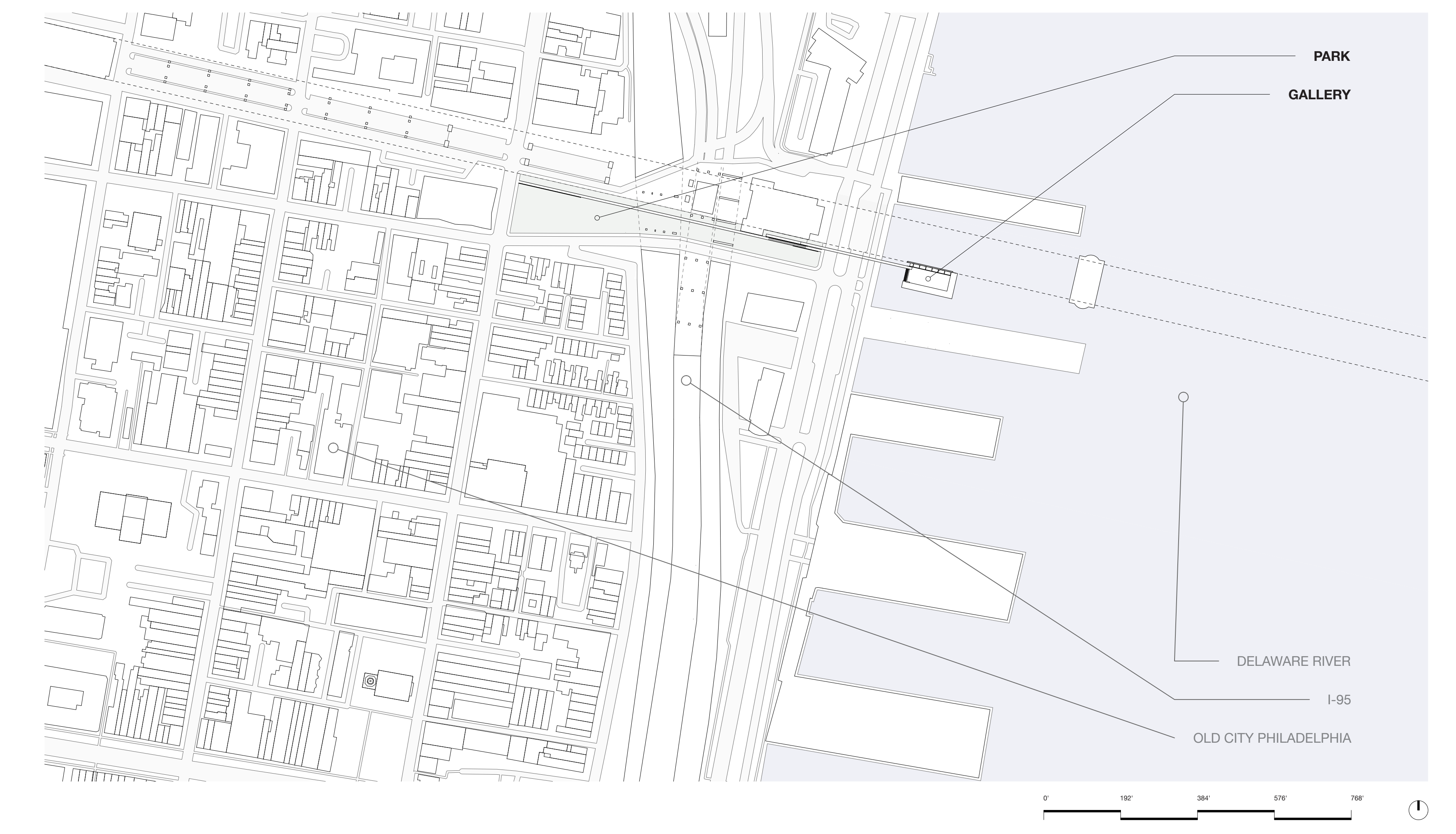


This project connects Philadelphia's Old City neighborhood to the Delaware River. The neighborhood, housing the city's oldest settlements, has been disconnected from direct riverfront access due to the presence of Interstate 95.

The first phase of the project transforms the vacant space beneath the I-95 into a green space, integrating earthy mounds that harmonize with the terrain's slope. Additionally, a linear path creates a connection from Old Street to Christopher Columbus Blvd.

The subsequent phase of the project consists of a gallery intended for exhibiting the artwork of local artists. This initiative aims to develop a community-oriented program within the vicinity.

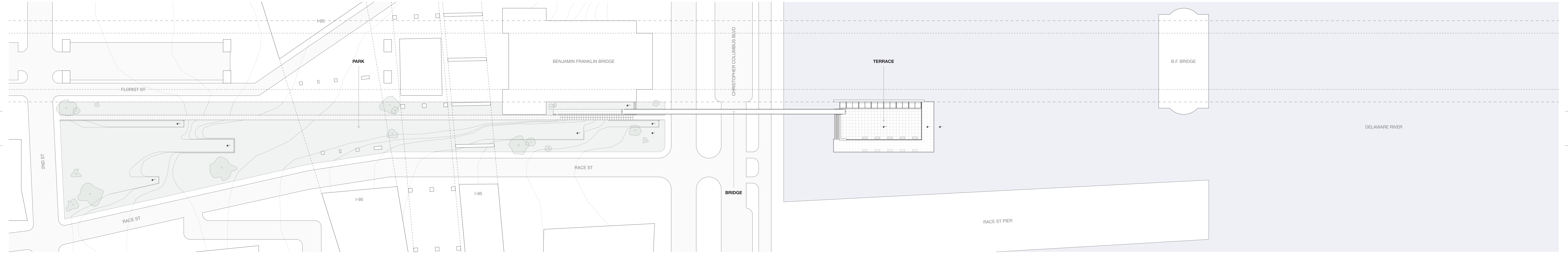
The gallery is accessed through a steel footbridge from the park, leading visitors to a roof terrace. A following lower terrace guides visitors to the gallery's entry. Its design consists of a concrete structure with south-facing glass walls, set against a thick stone-clad wall. The gallery's volume, rising from the river, emulates an artificial island.



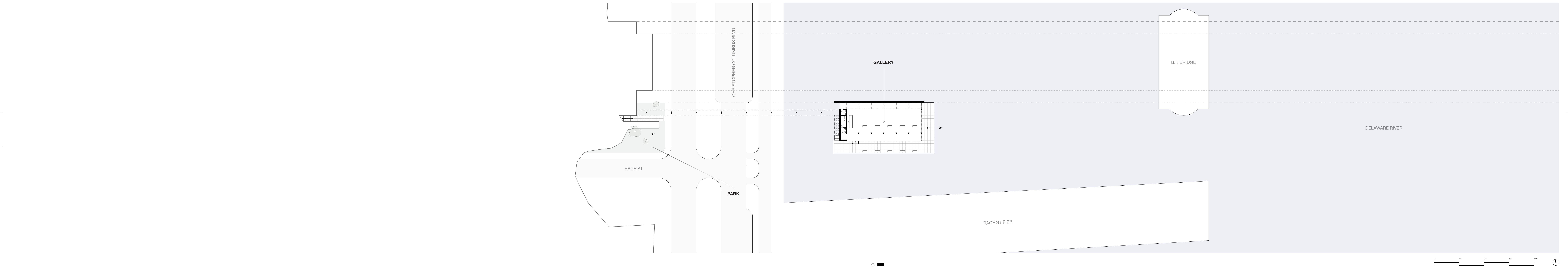
ISLE GALLERY

Interior Area: 4,992 sq. ft. (464 m²)

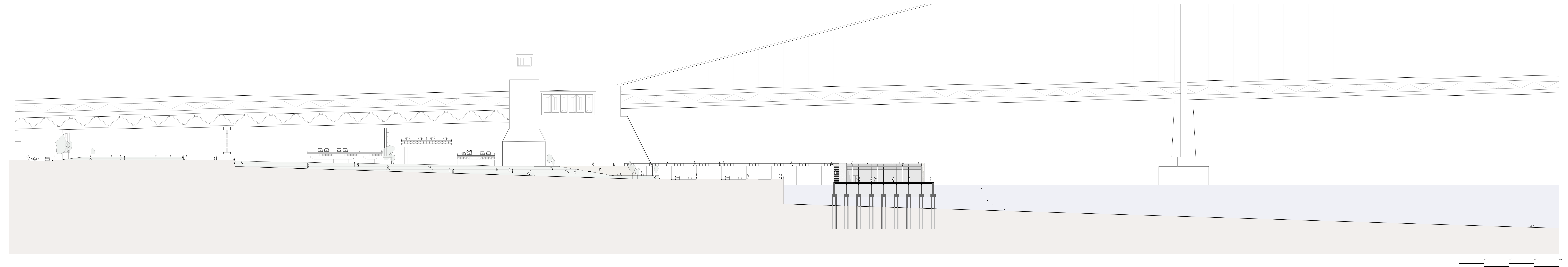
PLAN 01



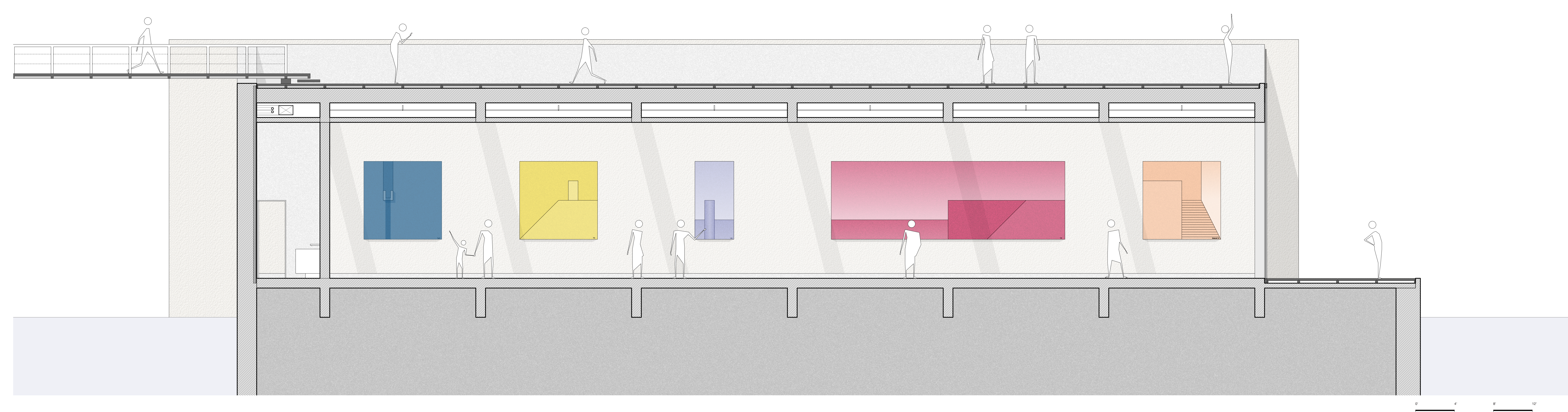
PLAN 00



SECTION A



SECTION B



SECTION C

